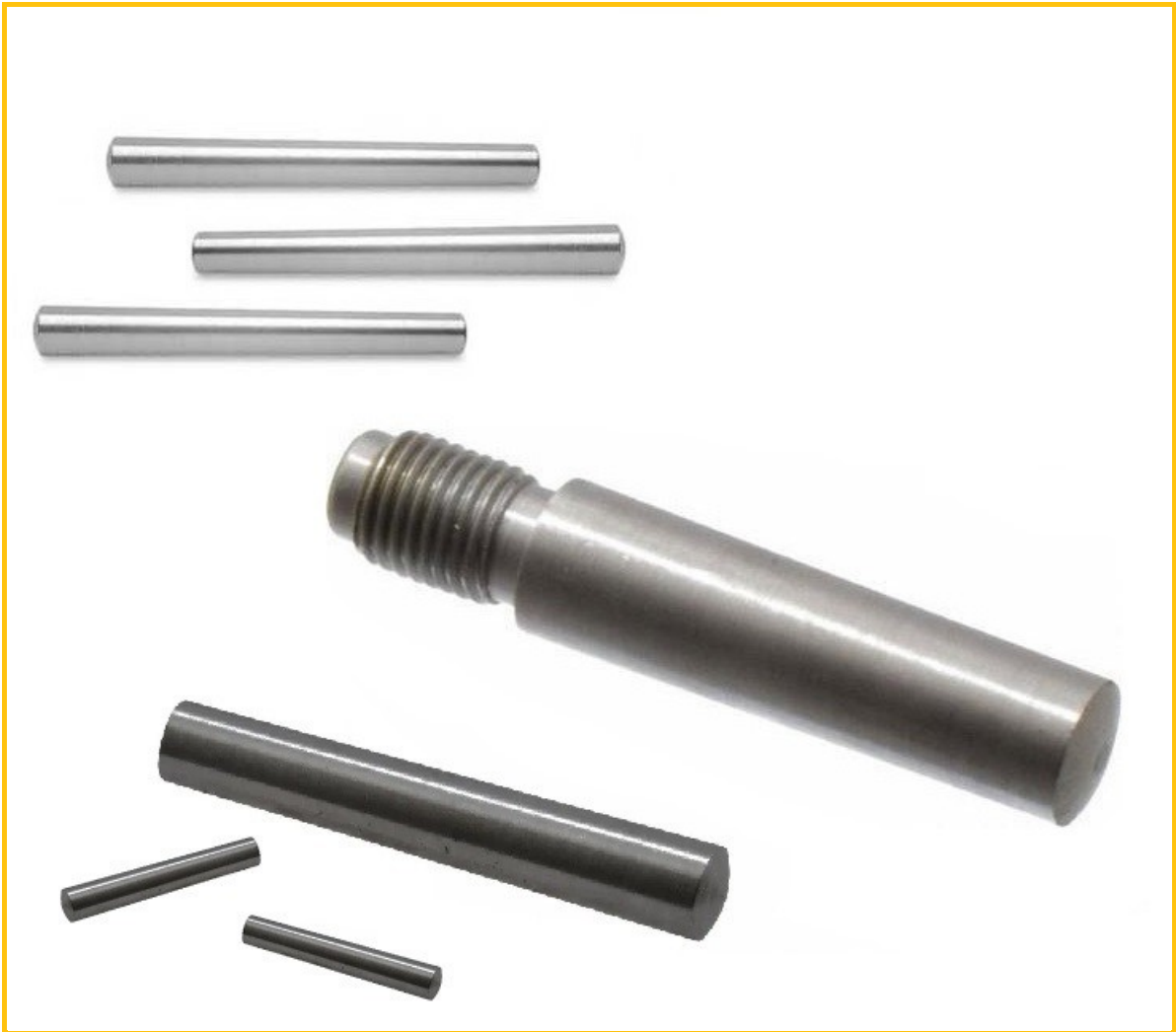


MBA

2024.2

Taper Pins

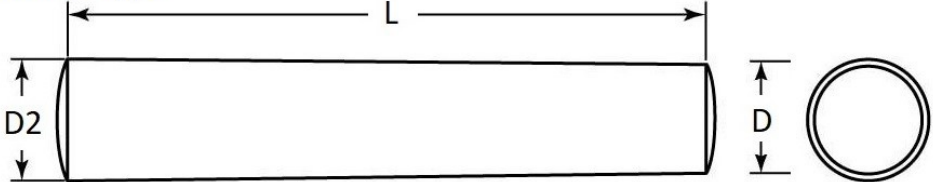
Carbon Steel - Stainless Steel - Standard and Extractable



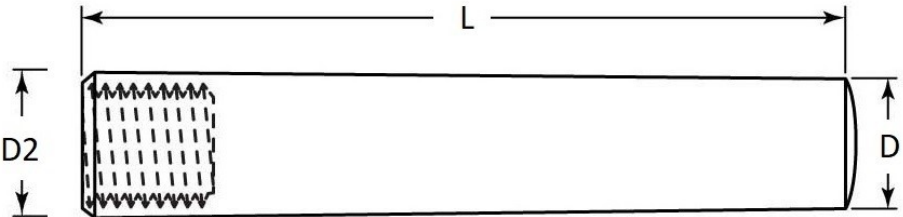
Copy the part number from this catalogue into the search box on any web page for more information, pricing and availability.

Diagrams

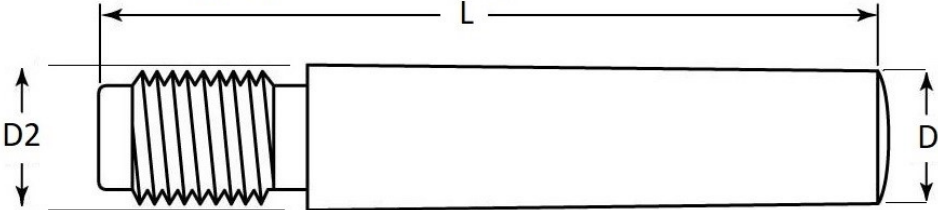
Standard Type



Extractable Type (Internal Thread)



Extractable Type (External Thread)



Imperial Taper Pins

Nom. Large End Diameter (D2) mm (inches)	Length (L) mm	Nom. Small End Diameter (D) mm	Part Number	
0.79 (0.031")	6.35	0.66	TP-008-0064-S3	<i>Pins - Taper - Imperial - Miniature - Stainless Steel</i> Material: 303 Stainless - Pin Number: 9/0
0.79 (0.031")	9.53	0.59	TP-008-0095-S3	<i>Pins - Taper - Imperial - Miniature - Stainless Steel</i> Material: 303 Stainless - Pin Number: 9/0
1.19 (0.047")	6.35	1.06	TP-012-0064-S3	<i>Pins - Taper - Imperial - Miniature - Stainless Steel</i> Material: 303 Stainless - Pin Number: 8/0
1.19 (0.047")	9.53	0.99	TP-012-0095-S3	<i>Pins - Taper - Imperial - Miniature - Stainless Steel</i> Material: 303 Stainless - Pin Number: 8/0
1.19 (0.047")	12.70	0.93	TP-012-0127-S3	<i>Pins - Taper - Imperial - Miniature - Stainless Steel</i> Material: 303 Stainless - Pin Number: 8/0
1.59 (0.063")	6.35	1.46	TP-016-0064-C	<i>Pins - Taper - Imperial - Miniature - Carbon Steel</i> Material: Carbon Steel - Pin Number: 7/0
1.59 (0.063")	7.94	1.42	TP-016-0079-C	<i>Pins - Taper - Imperial - Miniature - Carbon Steel</i> Material: Carbon Steel - Pin Number: 7/0
1.59 (0.063")	9.53	1.39	TP-016-0095-S3	<i>Pins - Taper - Imperial - Miniature - Stainless Steel</i> Material: 303 Stainless - Pin Number: 7/0
1.59 (0.063")	11.11	1.36	TP-016-0111-S3	<i>Pins - Taper - Imperial - Miniature - Stainless Steel</i> Material: 303 Stainless - Pin Number: 7/0
1.59 (0.063")	11.11	1.36	TP-016-0111-C	<i>Pins - Taper - Imperial - Miniature - Carbon Steel</i> Material: Carbon Steel - Pin Number: 7/0
1.59 (0.063")	12.70	1.33	TP-016-0127-S3	<i>Pins - Taper - Imperial - Miniature - Stainless Steel</i> Material: 303 Stainless - Pin Number: 7/0
1.59 (0.063")	12.70	1.33	TP-016-0127-C	<i>Pins - Taper - Imperial - Miniature - Carbon Steel</i> Material: Carbon Steel - Pin Number: 7/0
1.59 (0.063")	14.29	1.29	TP-016-0143-S3	<i>Pins - Taper - Imperial - Miniature - Stainless Steel</i> Material: 303 Stainless - Pin Number: 7/0
1.59 (0.063")	15.88	1.26	TP-016-0159-S3	<i>Pins - Taper - Imperial - Miniature - Stainless Steel</i> Material: 303 Stainless - Pin Number: 7/0
1.59 (0.063")	38.10	0.80	TP-016-0381-C	<i>Pins - Taper - Imperial - Miniature - Carbon Steel</i> Material: Carbon Steel - Pin Number: 7/0
1.98 (0.078")	6.35	1.85	TP-020-0064-C	<i>Pins - Taper - Imperial - Miniature - Carbon Steel</i> Material: Carbon Steel - Pin Number: 6/0
1.98 (0.078")	7.94	1.81	TP-020-0079-C	<i>Pins - Taper - Imperial - Miniature - Carbon Steel</i> Material: Carbon Steel - Pin Number: 6/0
1.98 (0.078")	9.53	1.78	TP-020-0095-C	<i>Pins - Taper - Imperial - Miniature - Carbon Steel</i> Material: Carbon Steel - Pin Number: 6/0
1.98 (0.078")	11.11	1.75	TP-020-0111-S3	<i>Pins - Taper - Imperial - Miniature - Stainless Steel</i> Material: 303 Stainless - Pin Number: 6/0
1.98 (0.078")	11.11	1.75	TP-020-0111-C	<i>Pins - Taper - Imperial - Miniature - Carbon Steel</i> Material: Carbon Steel - Pin Number: 6/0
1.98 (0.078")	12.70	1.72	TP-020-0127-S3	<i>Pins - Taper - Imperial - Miniature - Stainless Steel</i> Material: 303 Stainless - Pin Number: 6/0
1.98 (0.078")	12.70	1.72	TP-020-0127-C	<i>Pins - Taper - Imperial - Miniature - Carbon Steel</i> Material: Carbon Steel - Pin Number: 6/0
1.98 (0.078")	14.29	1.68	TP-020-0143-S3	<i>Pins - Taper - Imperial - Miniature - Stainless Steel</i> Material: 303 Stainless - Pin Number: 6/0
1.98 (0.078")	14.29	1.68	TP-020-0143-C	<i>Pins - Taper - Imperial - Miniature - Carbon Steel</i> Material: Carbon Steel - Pin Number: 6/0
1.98 (0.078")	15.88	1.65	TP-020-0159-S3	<i>Pins - Taper - Imperial - Miniature - Stainless Steel</i> Material: 303 Stainless - Pin Number: 6/0
1.98 (0.078")	15.88	1.65	TP-020-0159-C	<i>Pins - Taper - Imperial - Miniature - Carbon Steel</i> Material: Carbon Steel - Pin Number: 6/0
1.98 (0.078")	19.05	1.58	TP-020-0191-S3	<i>Pins - Taper - Imperial - Miniature - Stainless Steel</i> Material: 303 Stainless - Pin Number: 6/0
1.98 (0.078")	38.10	1.19	TP-020-0381-C	<i>Pins - Taper - Imperial - Miniature - Carbon Steel</i> Material: Carbon Steel - Pin Number: 6/0
2.38 (0.094")	6.35	2.25	TP-024-0064-C	<i>Pins - Taper - Imperial - Miniature - Carbon Steel</i> Material: Carbon Steel - Pin Number: 5/0
2.38 (0.094")	9.53	2.18	TP-024-0095-C	<i>Pins - Taper - Imperial - Miniature - Carbon Steel</i> Material: Carbon Steel - Pin Number: 5/0
2.38 (0.094")	11.11	2.15	TP-024-0111-C	<i>Pins - Taper - Imperial - Miniature - Carbon Steel</i> Material: Carbon Steel - Pin Number: 5/0

Usually stocked or Short Delivery
 ** Available while stocks last **

Long Delivery or Large Minimum Quantities
 Not in current production

Imperial Taper Pins

Nom. Large End Diameter (D2) mm (inches)	Length (L) mm	Nom. Small End Diameter (D) mm	Part Number	
2.38 (0.094")	12.70	2.12	TP-024-0127-S3	<i>Pins - Taper - Imperial - Miniature - Stainless Steel</i> Material: 303 Stainless - Pin Number: 5/0
2.38 (0.094")	12.70	2.12	TP-024-0127-C	<i>Pins - Taper - Imperial - Miniature - Carbon Steel</i> Material: Carbon Steel - Pin Number: 5/0
2.38 (0.094")	14.29	2.08	TP-024-0143-S3	<i>Pins - Taper - Imperial - Miniature - Stainless Steel</i> Material: 303 Stainless - Pin Number: 5/0
2.38 (0.094")	14.29	2.08	TP-024-0143-C	<i>Pins - Taper - Imperial - Miniature - Carbon Steel</i> Material: Carbon Steel - Pin Number: 5/0
2.38 (0.094")	15.88	2.05	TP-024-0159-S3	<i>Pins - Taper - Imperial - Miniature - Stainless Steel</i> Material: 303 Stainless - Pin Number: 5/0
2.38 (0.094")	15.88	2.05	TP-024-0159-C	<i>Pins - Taper - Imperial - Miniature - Carbon Steel</i> Material: Carbon Steel - Pin Number: 5/0
2.38 (0.094")	17.46	2.02	TP-024-0175-C	<i>Pins - Taper - Imperial - Miniature - Carbon Steel</i> Material: Carbon Steel - Pin Number: 5/0
2.38 (0.094")	19.05	1.98	TP-024-0191-S3	<i>Pins - Taper - Imperial - Miniature - Stainless Steel</i> Material: 303 Stainless - Pin Number: 5/0
2.38 (0.094")	19.05	1.98	TP-024-0191-C	<i>Pins - Taper - Imperial - Miniature - Carbon Steel</i> Material: Carbon Steel - Pin Number: 5/0
2.38 (0.094")	22.23	1.92	TP-024-0222-S3	<i>Pins - Taper - Imperial - Miniature - Stainless Steel</i> Material: 303 Stainless - Pin Number: 5/0
2.38 (0.094")	22.23	1.92	TP-024-0222-C	<i>Pins - Taper - Imperial - Miniature - Carbon Steel</i> Material: Carbon Steel - Pin Number: 5/0
2.38 (0.094")	23.81	1.88	TP-024-0238-C	<i>Pins - Taper - Imperial - Miniature - Carbon Steel</i> Material: Carbon Steel - Pin Number: 5/0
2.38 (0.094")	25.40	1.85	TP-024-0254-C	<i>Pins - Taper - Imperial - Miniature - Carbon Steel</i> Material: Carbon Steel - Pin Number: 5/0
2.38 (0.094")	38.10	1.59	TP-024-0381-C	<i>Pins - Taper - Imperial - Miniature - Carbon Steel</i> Material: Carbon Steel - Pin Number: 5/0
2.78 (0.109")	9.53	2.58	TP-028-0095-C	<i>Pins - Taper - Imperial - Miniature - Carbon Steel</i> Material: Carbon Steel - Pin Number: 4/0
2.78 (0.109")	12.70	2.52	TP-028-0127-C	<i>Pins - Taper - Imperial - Miniature - Carbon Steel</i> Material: Carbon Steel - Pin Number: 4/0
2.78 (0.109")	14.29	2.48	TP-028-0143-C	<i>Pins - Taper - Imperial - Miniature - Carbon Steel</i> Material: Carbon Steel - Pin Number: 4/0
2.78 (0.109")	15.88	2.45	TP-028-0159-S3	<i>Pins - Taper - Imperial - Miniature - Stainless Steel</i> Material: 303 Stainless - Pin Number: 4/0
2.78 (0.109")	15.88	2.45	TP-028-0159-C	<i>Pins - Taper - Imperial - Miniature - Carbon Steel</i> Material: Carbon Steel - Pin Number: 4/0
2.78 (0.109")	17.46	2.42	TP-028-0175-C	<i>Pins - Taper - Imperial - Miniature - Carbon Steel</i> Material: Carbon Steel - Pin Number: 4/0
2.78 (0.109")	19.05	2.37	TP-028-0191-C	<i>Pins - Taper - Imperial - Miniature - Carbon Steel</i> Material: Carbon Steel - Pin Number: 4/0
2.78 (0.109")	19.05	2.38	TP-028-0191-S3	<i>Pins - Taper - Imperial - Miniature - Stainless Steel</i> Material: 303 Stainless - Pin Number: 4/0
2.78 (0.109")	20.64	2.35	TP-028-0206-C	<i>Pins - Taper - Imperial - Miniature - Carbon Steel</i> Material: Carbon Steel - Pin Number: 4/0
2.78 (0.109")	22.23	2.32	TP-028-0222-S3	<i>Pins - Taper - Imperial - Miniature - Stainless Steel</i> Material: 303 Stainless - Pin Number: 4/0
2.78 (0.109")	22.23	2.32	TP-028-0222-C	<i>Pins - Taper - Imperial - Miniature - Carbon Steel</i> Material: Carbon Steel - Pin Number: 4/0
2.78 (0.109")	23.81	2.28	TP-028-0238-C	<i>Pins - Taper - Imperial - Miniature - Carbon Steel</i> Material: Carbon Steel - Pin Number: 4/0
2.78 (0.109")	25.40	2.25	TP-028-0254-S3	<i>Pins - Taper - Imperial - Miniature - Stainless Steel</i> Material: 303 Stainless - Pin Number: 4/0
2.78 (0.109")	25.40	2.25	TP-028-0254-C	<i>Pins - Taper - Imperial - Miniature - Carbon Steel</i> Material: Carbon Steel - Pin Number: 4/0
2.78 (0.109")	76.200	2.25	TP-028-0762-C	<i>Pins - Taper - Imperial - Miniature - Carbon Steel</i> Material: Carbon Steel - Pin Number: 4/0
3.18 (0.125")	6.35	3.05	TP-032-0064-C	<i>Pins - Taper - Imperial - Miniature - Carbon Steel</i> Material: Carbon Steel - Pin Number: 3/0
3.18 (0.125")	9.53	2.98	TP-032-0095-C	<i>Pins - Taper - Imperial - Miniature - Stainless Steel</i> Material: Carbon Steel - Pin Number: 3/0

Usually stocked or Short Delivery
 ** Available while stocks last **

Long Delivery or Large Minimum Quantities
 Not in current production

Imperial Taper Pins

Nom. Large End Diameter (D2) mm (inches)	Length (L) mm	Nom. Small End Diameter (D) mm	Part Number	
3.18 (0.125")	12.70	2.92	TP-032-0127-C	<i>Pins - Taper - Imperial - Miniature - Carbon Steel</i> Material: Carbon Steel - Pin Number: 3/0
3.18 (0.125")	14.29	2.88	TP-032-0143-C	<i>Pins - Taper - Imperial - Miniature - Carbon Steel</i> Material: Carbon Steel - Pin Number: 3/0
3.18 (0.125")	15.88	2.85	TP-032-0159-S3	<i>Pins - Taper - Imperial - Miniature - Stainless Steel</i> Material: 303 Stainless - Pin Number: 3/0
3.18 (0.125")	15.88	2.85	TP-032-0159-C	<i>Pins - Taper - Imperial - Miniature - Carbon Steel</i> Material: Carbon Steel - Pin Number: 3/0
3.18 (0.125")	17.46	2.82	TP-032-0175-C	<i>Pins - Taper - Imperial - Miniature - Carbon Steel</i> Material: Carbon Steel - Pin Number: 3/0
3.18 (0.125")	19.05	2.78	TP-032-0191-C	<i>Pins - Taper - Imperial - Miniature - Carbon Steel</i> Material: Carbon Steel - Pin Number: 3/0
3.18 (0.125")	19.05	2.78	TP-032-0191-S3	<i>Pins - Taper - Imperial - Miniature - Stainless Steel</i> Material: 303 Stainless - Pin Number: 3/0
3.18 (0.125")	20.64	2.75	TP-032-0206-C	<i>Pins - Taper - Imperial - Miniature - Carbon Steel</i> Material: Carbon Steel - Pin Number: 3/0
3.18 (0.125")	22.23	2.72	TP-032-0222-S3	<i>Pins - Taper - Imperial - Miniature - Stainless Steel</i> Material: 303 Stainless - Pin Number: 3/0
3.18 (0.125")	23.81	2.68	TP-032-0238-C	<i>Pins - Taper - Imperial - Miniature - Carbon Steel</i> Material: Carbon Steel - Pin Number: 3/0
3.18 (0.125")	25.40	2.65	TP-032-0254-C	<i>Pins - Taper - Imperial - Miniature - Carbon Steel</i> Material: Carbon Steel - Pin Number: 3/0
3.18 (0.125")	25.40	2.65	TP-032-0254-S3	<i>Pins - Taper - Imperial - Miniature - Stainless Steel</i> Material: 303 Stainless - Pin Number: 3/0
3.18 (0.125")	38.10	2.38	TP-032-0381-C	<i>Pins - Taper - Imperial - Miniature - Carbon Steel</i> Material: Carbon Steel - Pin Number: 3/0
3.18 (0.125")	76.20	1.59	TP-032-0762-C	<i>Pins - Taper - Imperial - Miniature - Carbon Steel</i> Material: Carbon Steel - Pin Number: 3/0
3.58 (0.141")	9.53	3.38	TP-036-0095-C	<i>Pins - Taper - Imperial - Miniature - Carbon Steel</i> Material: Carbon Steel - Pin Number: 2/0
3.58 (0.141")	12.70	3.32	TP-036-0127-C	<i>Pins - Taper - Imperial - Miniature - Carbon Steel</i> Material: Carbon Steel - Pin Number: 2/0
3.58 (0.141")	14.29	3.28	TP-036-0143-C	<i>Pins - Taper - Imperial - Miniature - Carbon Steel</i> Material: Carbon Steel - Pin Number: 2/0
3.58 (0.141")	15.88	3.25	TP-036-0159-C	<i>Pins - Taper - Imperial - Miniature - Carbon Steel</i> Material: Carbon Steel - Pin Number: 2/0
3.58 (0.141")	17.46	3.22	TP-036-0175-C	<i>Pins - Taper - Imperial - Miniature - Carbon Steel</i> Material: Carbon Steel - Pin Number: 2/0
3.58 (0.141")	19.05	3.18	TP-036-0191-S3	<i>Pins - Taper - Imperial - Miniature - Stainless Steel</i> Material: 303 Stainless - Pin Number: 2/0
3.58 (0.141")	19.05	3.18	TP-036-0191-C	<i>Pins - Taper - Imperial - Miniature - Carbon Steel</i> Material: Carbon Steel - Pin Number: 2/0
3.58 (0.141")	20.64	3.15	TP-036-0206-C	<i>Pins - Taper - Imperial - Miniature - Carbon Steel</i> Material: Carbon Steel - Pin Number: 2/0
3.58 (0.141")	22.23	3.12	TP-036-0222-S3	<i>Pins - Taper - Imperial - Miniature - Stainless Steel</i> Material: 303 Stainless - Pin Number: 2/0
3.58 (0.141")	22.23	3.12	TP-036-0222-C	<i>Pins - Taper - Imperial - Miniature - Carbon Steel</i> Material: Carbon Steel - Pin Number: 2/0
3.58 (0.141")	25.40	3.05	TP-036-0254-S3	<i>Pins - Taper - Imperial - Miniature - Stainless Steel</i> Material: 303 Stainless - Pin Number: 2/0
3.58 (0.141")	25.40	3.05	TP-036-0254-C	<i>Pins - Taper - Imperial - Miniature - Carbon Steel</i> Material: Carbon Steel - Pin Number: 2/0
3.58 (0.141")	25.40	3.05	TP-036-0254-CS	<i>Pins - Taper - Imperial - Miniature - Carbon Steel</i> Material: Carbon Steel - Pin Number: 2/0
3.58 (0.141")	31.75	2.92	TP-036-0318-S3	<i>Pins - Taper - Imperial - Miniature - Stainless Steel</i> Material: 303 Stainless - Pin Number: 2/0
3.58 (0.141")	76.20	1.99	TP-036-0762-C	<i>Pins - Taper - Imperial - Miniature - Carbon Steel</i> Material: Carbon Steel - Pin Number: 2/0
3.97 (0.156")	12.70	3.71	TP-039-0127-C	<i>Pins - Taper - Imperial - Standard - Carbon Steel</i> Material: Carbon Steel - Pin Number: 0
3.97 (0.156")	14.29	3.67	TP-039-0143-C	<i>Pins - Taper - Imperial - Standard - Carbon Steel</i> Material: Carbon Steel - Pin Number: 0

Usually stocked or Short Delivery
 ** Available while stocks last **

Long Delivery or Large Minimum Quantities
 Not in current production

Imperial Taper Pins


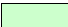
Nom. Large End Diameter (D2) mm (inches)	Length (L) mm	Nom. Small End Diameter (D) mm	Part Number	
3.97 (0.156")	15.88	3.64	TP-039-0159-C	<i>Pins - Taper - Imperial - Standard - Carbon Steel</i> Material: Carbon Steel - Pin Number: 0
3.97 (0.156")	17.46	3.61	TP-039-0175-C	<i>Pins - Taper - Imperial - Standard - Carbon Steel</i> Material: Carbon Steel - Pin Number: 0
3.97 (0.156")	19.05	3.56	TP-039-0191-C	<i>Pins - Taper - Imperial - Standard - Carbon Steel</i> Material: Carbon Steel - Pin Number: 0
3.97 (0.156")	20.64	3.54	TP-039-0206-C	<i>Pins - Taper - Imperial - Standard - Carbon Steel</i> Material: Carbon Steel - Pin Number: 0
3.97 (0.156")	22.23	3.51	TP-039-0222-C	<i>Pins - Taper - Imperial - Standard - Carbon Steel</i> Material: Carbon Steel - Pin Number: 0
3.97 (0.156")	23.81	3.47	TP-039-0238-C	<i>Pins - Taper - Imperial - Standard - Carbon Steel</i> Material: Carbon Steel - Pin Number: 0
3.97 (0.156")	25.40	3.44	TP-039-0254-C	<i>Pins - Taper - Imperial - Standard - Carbon Steel</i> Material: Carbon Steel - Pin Number: 0
3.97 (0.156")	31.75	3.30	TP-039-0318-C	<i>Pins - Taper - Imperial - Standard - Carbon Steel</i> Material: Carbon Steel - Pin Number: 0
3.97 (0.156")	38.1	3.17	TP-039-0381-C	<i>Pins - Taper - Imperial - Standard - Carbon Steel</i> Material: Carbon Steel - Pin Number: 0
3.97 (0.156")	44.45	3.03	TP-039-0445-S3	<i>Pins - Taper - Imperial - Standard - Stainless Steel</i> Material: 304 Stainless - Pin Number: 0
3.97 (0.156")	44.45	3.03	TP-039-0445-C	<i>Pins - Taper - Imperial - Standard - Carbon Steel</i> Material: Carbon Steel - Pin Number: 0
3.97 (0.156")	50.80	2.90	TP-039-0508-C	<i>Pins - Taper - Imperial - Standard - Carbon Steel</i> Material: Carbon Steel - Pin Number: 0
3.97 (0.156")	76.20	2.37	TP-039-0762-C	<i>Pins - Taper - Imperial - Standard - Carbon Steel</i> Material: Carbon Steel - Pin Number: 0
3.97 (0.156")	101.60	1.84	TP-039-1016-C	<i>Pins - Taper - Imperial - Standard - Carbon Steel</i> Material: Carbon Steel - Pin Number: 0
4.37 (0.172")	19.05	3.97	TP-044-0191-C	<i>Pins - Taper - Imperial - Standard - Carbon Steel</i> Material: Carbon Steel - Pin Number: 1
4.37 (0.172")	25.40	3.84	TP-044-0254-C	<i>Pins - Taper - Imperial - Standard - Carbon Steel</i> Material: Carbon Steel - Pin Number: 1
4.37 (0.172")	31.75	3.70	TP-044-0318-C	<i>Pins - Taper - Imperial - Standard - Carbon Steel</i> Material: Carbon Steel - Pin Number: 1
4.37 (0.172")	38.10	3.58	TP-044-0381-C	<i>Pins - Taper - Imperial - Standard - Carbon Steel</i> Material: Carbon Steel - Pin Number: 1
4.37 (0.172")	50.80	3.31	TP-044-0508-C	<i>Pins - Taper - Imperial - Standard - Carbon Steel</i> Material: Carbon Steel - Pin Number: 1
4.37 (0.172")	76.20	2.78	TP-044-0762-C	<i>Pins - Taper - Imperial - Standard - Carbon Steel</i> Material: Carbon Steel - Pin Number: 1
4.76 (0.187")	44.45	3.97	TP-048-0445-S3	<i>Pins - Taper - Imperial - Standard - Stainless Steel</i> Material: 304 Stainless - Pin Number: 2
4.76 (0.188")	19.05	4.37	TP-048-0191-C	<i>Pins - Taper - Imperial - Standard - Carbon Steel</i> Material: Carbon Steel - Pin Number: 2
4.76 (0.188")	25.40	4.23	TP-048-0254-C	<i>Pins - Taper - Imperial - Standard - Carbon Steel</i> Material: Carbon Steel - Pin Number: 2
4.76 (0.188")	31.75	4.10	TP-048-0318-C	<i>Pins - Taper - Imperial - Standard - Carbon Steel</i> Material: Carbon Steel - Pin Number: 2
4.76 (0.188")	38.10	3.97	TP-048-0381-C	<i>Pins - Taper - Imperial - Standard - Carbon Steel</i> Material: Carbon Steel - Pin Number: 2
4.76 (0.188")	50.80	3.70	TP-048-0508-C	<i>Pins - Taper - Imperial - Standard - Carbon Steel</i> Material: Carbon Steel - Pin Number: 2
4.76 (0.188")	57.15	3.57	TP-048-0572-C	<i>Pins - Taper - Imperial - Standard - Carbon Steel</i> Material: Carbon Steel - Pin Number: 2
4.76 (0.188")	63.50	3.44	TP-048-0635-C	<i>Pins - Taper - Imperial - Standard - Carbon Steel</i> Material: Carbon Steel - Pin Number: 2
4.76 (0.188")	76.20	3.18	TP-048-0762-C	<i>Pins - Taper - Imperial - Standard - Carbon Steel</i> Material: Carbon Steel - Pin Number: 2
4.76 (0.188")	101.60	2.65	TP-048-1016-C	<i>Pins - Taper - Imperial - Standard - Carbon Steel</i> Material: Carbon Steel - Pin Number: 2
5.56 (0.219")	19.05	5.16	TP-056-0191-C	<i>Pins - Taper - Imperial - Standard - Carbon Steel</i> Material: Carbon Steel - Pin Number: 3

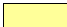

Usually stocked or Short Delivery
** Available while stocks last **

Long Delivery or Large Minimum Quantities
Not in current production

Imperial Taper Pins

Nom. Large End Diameter (D2) mm (inches)	Length (L) mm	Nom. Small End Diameter (D) mm	Part Number	
5.56 (0.219")	25.40	5.03	TP-056-0254-C	<i>Pins - Taper - Imperial - Standard - Carbon Steel</i> Material: Carbon Steel - Pin Number: 3
5.56 (0.219")	31.75	4.89	TP-056-0318-C	<i>Pins - Taper - Imperial - Standard - Carbon Steel</i> Material: Carbon Steel - Pin Number: 3
5.56 (0.219")	38.10	4.76	TP-056-0381-C	<i>Pins - Taper - Imperial - Standard - Carbon Steel</i> Material: Carbon Steel - Pin Number: 3
5.56 (0.219")	50.80	4.50	TP-056-0508-C	<i>Pins - Taper - Imperial - Standard - Carbon Steel</i> Material: Carbon Steel - Pin Number: 3
5.56 (0.219")	57.15	4.37	TP-056-0572-C	<i>Pins - Taper - Imperial - Standard - Carbon Steel</i> Material: Carbon Steel - Pin Number: 3
5.56 (0.219")	63.50	4.23	TP-056-0635-C	<i>Pins - Taper - Imperial - Standard - Carbon Steel</i> Material: Carbon Steel - Pin Number: 3
5.56 (0.219")	76.20	3.97	TP-056-0762-C	<i>Pins - Taper - Imperial - Standard - Carbon Steel</i> Material: Carbon Steel - Pin Number: 3
5.56 (0.219")	88.90	3.70	TP-056-0889-C	<i>Pins - Taper - Imperial - Standard - Carbon Steel</i> Material: Carbon Steel - Pin Number: 3
5.56 (0.219")	101.60	3.44	TP-056-1016-C	<i>Pins - Taper - Imperial - Standard - Carbon Steel</i> Material: Carbon Steel - Pin Number: 3
5.56 (0.219")	127.00	2.91	TP-056-1270-C	<i>Pins - Taper - Imperial - Standard - Carbon Steel</i> Material: Carbon Steel - Pin Number: 3
6.35 (0.250")	19.05	5.95	TP-064-0191-C	<i>Pins - Taper - Imperial - Standard - Carbon Steel</i> Material: Carbon Steel - Pin Number: 4
6.35 (0.250")	25.40	5.82	TP-064-0254-C	<i>Pins - Taper - Imperial - Standard - Carbon Steel</i> Material: Carbon Steel - Pin Number: 4
6.35 (0.250")	31.75	5.64	TP-064-0318-S4-EE	<i>Pins - Taper - Imperial - Extractable - External Thread - Stainless Steel</i> Material: 304 Stainless - Pin Number: 4
6.35 (0.250")	31.75	5.69	TP-064-0318-C	<i>Pins - Taper - Imperial - Standard - Carbon Steel</i> Material: Carbon Steel - Pin Number: 4
6.35 (0.250")	38.10	5.56	TP-064-0381-C	<i>Pins - Taper - Imperial - Standard - Carbon Steel</i> Material: Carbon Steel - Pin Number: 4
6.35 (0.250")	44.45	5.42	TP-064-0445-C	<i>Pins - Taper - Imperial - Standard - Carbon Steel</i> Material: Carbon Steel - Pin Number: 4
6.35 (0.250")	50.80	5.29	TP-064-0508-C	<i>Pins - Taper - Imperial - Standard - Carbon Steel</i> Material: Carbon Steel - Pin Number: 4
6.35 (0.250")	57.15	5.16	TP-064-0572-C	<i>Pins - Taper - Imperial - Standard - Carbon Steel</i> Material: Carbon Steel - Pin Number: 4
6.35 (0.250")	63.50	5.03	TP-064-0635-C	<i>Pins - Taper - Imperial - Standard - Carbon Steel</i> Material: Carbon Steel - Pin Number: 4
6.35 (0.250")	76.20	4.76	TP-064-0762-C	<i>Pins - Taper - Imperial - Standard - Carbon Steel</i> Material: Carbon Steel - Pin Number: 4
6.35 (0.250")	88.90	4.50	TP-064-0889-C	<i>Pins - Taper - Imperial - Standard - Carbon Steel</i> Material: Carbon Steel - Pin Number: 4
6.35 (0.250")	101.60	4.23	TP-064-1016-C	<i>Pins - Taper - Imperial - Standard - Carbon Steel</i> Material: Carbon Steel - Pin Number: 4
6.35 (0.250")	127.00	3.70	TP-064-1270-C	<i>Pins - Taper - Imperial - Standard - Carbon Steel</i> Material: Carbon Steel - Pin Number: 4
6.35 (0.250")	152.40	3.18	TP-064-1524-C	<i>Pins - Taper - Imperial - Standard - Carbon Steel</i> Material: Carbon Steel - Pin Number: 4
7.54 (0.297")	19.05	7.14	TP-075-0191-C	<i>Pins - Taper - Imperial - Standard - Carbon Steel</i> Material: Carbon Steel - Pin Number: 5
7.54 (0.297")	25.40	7.01	TP-075-0254-C	<i>Pins - Taper - Imperial - Standard - Carbon Steel</i> Material: Carbon Steel - Pin Number: 5
7.54 (0.297")	31.75	6.88	TP-075-0318-C	<i>Pins - Taper - Imperial - Standard - Carbon Steel</i> Material: Carbon Steel - Pin Number: 5
7.54 (0.297")	38.10	6.75	TP-075-0381-C	<i>Pins - Taper - Imperial - Standard - Carbon Steel</i> Material: Carbon Steel - Pin Number: 5
7.54 (0.297")	44.45	6.61	TP-075-0445-C	<i>Pins - Taper - Imperial - Standard - Carbon Steel</i> Material: Carbon Steel - Pin Number: 5
7.54 (0.297")	50.80	6.48	TP-075-0508-C	<i>Pins - Taper - Imperial - Standard - Carbon Steel</i> Material: Carbon Steel - Pin Number: 5
7.54 (0.297")	57.15	6.35	TP-075-0572-C	<i>Pins - Taper - Imperial - Standard - Carbon Steel</i> Material: Carbon Steel - Pin Number: 5

 Usually stocked or Short Delivery
 ** Available while stocks last **

 Long Delivery or Large Minimum Quantities
 Not in current production

Imperial Taper Pins

Nom. Large End Diameter (D2) mm (inches)	Length (L) mm	Nom. Small End Diameter (D) mm	Part Number	
7.54 (0.297")	63.50	6.22	TP-075-0635-C	<i>Pins - Taper - Imperial - Standard - Carbon Steel</i> Material: Carbon Steel - Pin Number: 5
7.54 (0.297")	69.85	6.09	TP-075-0699-C	<i>Pins - Taper - Imperial - Standard - Carbon Steel</i> Material: Carbon Steel - Pin Number: 5
7.54 (0.297")	76.20	5.95	TP-075-0762-C	<i>Pins - Taper - Imperial - Standard - Carbon Steel</i> Material: Carbon Steel - Pin Number: 5
7.54 (0.297")	88.90	5.69	TP-075-0889-C	<i>Pins - Taper - Imperial - Standard - Carbon Steel</i> Material: Carbon Steel - Pin Number: 5
7.54 (0.297")	101.60	5.42	TP-075-1016-C	<i>Pins - Taper - Imperial - Standard - Carbon Steel</i> Material: Carbon Steel - Pin Number: 5
7.54 (0.297")	114.30	5.16	TP-075-1143-C	<i>Pins - Taper - Imperial - Standard - Carbon Steel</i> Material: Carbon Steel - Pin Number: 5
7.54 (0.297")	127.00	4.89	TP-075-1270-C	<i>Pins - Taper - Imperial - Standard - Carbon Steel</i> Material: Carbon Steel - Pin Number: 5
7.54 (0.297")	152.40	4.37	TP-075-1524-C	<i>Pins - Taper - Imperial - Standard - Carbon Steel</i> Material: Carbon Steel - Pin Number: 5
7.54 (0.297")	31.75	6.64	TP-075-0318-S4-EE	<i>Pins - Taper - Imperial - Extractable - External Thread - Stainless Steel</i> Material: 304 Stainless - Pin Number: 5
8.73 (0.344")	25.40	8.20	TP-087-0254-C	<i>Pins - Taper - Imperial - Standard - Carbon Steel</i> Material: Carbon Steel - Pin Number: 6
8.73 (0.344")	31.75	8.07	TP-087-0318-S4-EE	<i>Pins - Taper - Imperial - Extractable - External Thread - Stainless Steel</i> Material: 304 Stainless - Pin Number: 6
8.73 (0.344")	31.75	8.07	TP-087-0318-C	<i>Pins - Taper - Imperial - Standard - Carbon Steel</i> Material: Carbon Steel - Pin Number: 6
8.73 (0.344")	38.10	7.94	TP-087-0381-C	<i>Pins - Taper - Imperial - Standard - Carbon Steel</i> Material: Carbon Steel - Pin Number: 6
8.73 (0.344")	38.10	7.94	TP-087-0381-S4-EE	<i>Pins - Taper - Imperial - Extractable - External Thread - Stainless Steel</i> Material: 304 Stainless - Pin Number: 6
8.73 (0.344")	44.45	7.81	TP-087-0445-C	<i>Pins - Taper - Imperial - Standard - Carbon Steel</i> Material: Carbon Steel - Pin Number: 6
8.73 (0.344")	50.80	7.67	TP-087-0508-C	<i>Pins - Taper - Imperial - Standard - Carbon Steel</i> Material: Carbon Steel - Pin Number: 6
8.73 (0.344")	57.15	7.54	TP-087-0572-S4-EE	<i>Pins - Taper - Imperial - Extractable - External Thread - Stainless Steel</i> Material: 304 Stainless - Pin Number: 6
8.73 (0.344")	57.15	7.54	TP-087-0572-C	<i>Pins - Taper - Imperial - Standard - Carbon Steel</i> Material: Carbon Steel - Pin Number: 6
8.73 (0.344")	63.50	7.41	TP-087-0635-C	<i>Pins - Taper - Imperial - Standard - Carbon Steel</i> Material: Carbon Steel - Pin Number: 6
8.73 (0.344")	69.85	7.28	TP-087-0699-C	<i>Pins - Taper - Imperial - Standard - Carbon Steel</i> Material: Carbon Steel - Pin Number: 6
8.73 (0.344")	76.20	7.14	TP-087-0762-C	<i>Pins - Taper - Imperial - Standard - Carbon Steel</i> Material: Carbon Steel - Pin Number: 6
8.73 (0.344")	88.90	6.88	TP-087-0889-C	<i>Pins - Taper - Imperial - Standard - Carbon Steel</i> Material: Carbon Steel - Pin Number: 6
8.73 (0.344")	101.60	6.61	TP-087-1016-S4-EE	<i>Pins - Taper - Imperial - Extractable - External Thread - Stainless Steel</i> Material: 304 Stainless - Pin Number: 6
8.73 (0.344")	101.60	6.61	TP-087-1016-C	<i>Pins - Taper - Imperial - Standard - Carbon Steel</i> Material: Carbon Steel - Pin Number: 6
8.73 (0.344")	114.30	6.35	TP-087-1143-C	<i>Pins - Taper - Imperial - Standard - Carbon Steel</i> Material: Carbon Steel - Pin Number: 6
8.73 (0.344")	127.00	6.09	TP-087-1270-C	<i>Pins - Taper - Imperial - Standard - Carbon Steel</i> Material: Carbon Steel - Pin Number: 6
8.73 (0.344")	152.40	5.56	TP-087-1524-C	<i>Pins - Taper - Imperial - Standard - Carbon Steel</i> Material: Carbon Steel - Pin Number: 6
10.32 (0.406")	25.40	9.79	TP-103-0254-C	<i>Pins - Taper - Imperial - Standard - Carbon Steel</i> Material: Carbon Steel - Pin Number: 7
10.32 (0.406")	31.75	9.66	TP-103-0318-C	<i>Pins - Taper - Imperial - Standard - Carbon Steel</i> Material: Carbon Steel - Pin Number: 7
10.32 (0.406")	38.10	9.53	TP-103-0381-S4-EE	<i>Pins - Taper - Imperial - Extractable - External Thread - Stainless Steel</i> Material: 304 Stainless - Pin Number: 7
10.32 (0.406")	38.10	9.53	TP-103-0381-C	<i>Pins - Taper - Imperial - Standard - Carbon Steel</i> Material: Carbon Steel - Pin Number: 7

Usually stocked or Short Delivery
 ** Available while stocks last **

Long Delivery or Large Minimum Quantities
 Not in current production

Imperial Taper Pins

Nom. Large End Diameter (D2) mm (inches)	Length (L) mm	Nom. Small End Diameter (D) mm	Part Number	
10.32 (0.406")	44.45	9.39	TP-103-0445-C	<i>Pins - Taper - Imperial - Standard - Carbon Steel</i> Material: Carbon Steel - Pin Number: 7
10.32 (0.406")	50.80	9.26	TP-103-0508-C	<i>Pins - Taper - Imperial - Standard - Carbon Steel</i> Material: Carbon Steel - Pin Number: 7
10.32 (0.406")	57.15	9.13	TP-103-0572-C	<i>Pins - Taper - Imperial - Standard - Carbon Steel</i> Material: Carbon Steel - Pin Number: 7
10.32 (0.406")	63.50	9.00	TP-103-0635-C	<i>Pins - Taper - Imperial - Standard - Carbon Steel</i> Material: Carbon Steel - Pin Number: 7
10.32 (0.406")	69.85	8.86	TP-103-0699-C	<i>Pins - Taper - Imperial - Standard - Carbon Steel</i> Material: Carbon Steel - Pin Number: 7
10.32 (0.406")	76.20	8.73	TP-103-0762-C	<i>Pins - Taper - Imperial - Standard - Carbon Steel</i> Material: Carbon Steel - Pin Number: 7
10.32 (0.406")	88.90	8.47	TP-103-0889-C	<i>Pins - Taper - Imperial - Standard - Carbon Steel</i> Material: Carbon Steel - Pin Number: 7
10.32 (0.406")	101.60	8.20	TP-103-1016-C	<i>Pins - Taper - Imperial - Standard - Carbon Steel</i> Material: Carbon Steel - Pin Number: 7
10.32 (0.406")	114.30	7.94	TP-103-1143-C	<i>Pins - Taper - Imperial - Standard - Carbon Steel</i> Material: Carbon Steel - Pin Number: 7
10.32 (0.406")	127.00	7.67	TP-103-1270-C	<i>Pins - Taper - Imperial - Standard - Carbon Steel</i> Material: Carbon Steel - Pin Number: 7
10.32 (0.406")	177.80	6.61	TP-103-1778-C	<i>Pins - Taper - Imperial - Standard - Carbon Steel</i> Material: Carbon Steel - Pin Number: 7
10.32 (0.406")	304.80	3.97	TP-103-3048-C	<i>Pins - Taper - Imperial - Standard - Carbon Steel</i> Material: Carbon Steel - Pin Number: 7
10.32 (0.406")	133.35	7.54	TP-103-1334-C	<i>Pins - Taper - Imperial - Standard - Carbon Steel</i> Material: Carbon Steel - Pin Number: 7
10.32 (0.406")	152.40	7.14	TP-103-1524-C	<i>Pins - Taper - Imperial - Standard - Carbon Steel</i> Material: Carbon Steel - Pin Number: 7
12.70 (0.500")	25.40	12.17	TP-127-0254-C	<i>Pins - Taper - Imperial - Standard - Carbon Steel</i> Material: Carbon Steel - Pin Number: 8
12.70 (0.500")	38.10	11.91	TP-127-0381-C	<i>Pins - Taper - Imperial - Standard - Carbon Steel</i> Material: Carbon Steel - Pin Number: 8
12.70 (0.500")	44.45	11.77	TP-127-0445-S4-EE	<i>Pins - Taper - Imperial - Extractable - External Thread - Stainless Steel</i> Material: 304 Stainless - Pin Number: 8
12.70 (0.500")	44.45	11.77	TP-127-0445-C	<i>Pins - Taper - Imperial - Standard - Carbon Steel</i> Material: Carbon Steel - Pin Number: 8
12.70 (0.500")	50.80	11.64	TP-127-0508-C	<i>Pins - Taper - Imperial - Standard - Carbon Steel</i> Material: Carbon Steel - Pin Number: 8
12.70 (0.500")	63.50	11.38	TP-127-0635-C	<i>Pins - Taper - Imperial - Standard - Carbon Steel</i> Material: Carbon Steel - Pin Number: 8
12.70 (0.500")	76.20	11.11	TP-127-0762-S4-EE	<i>Pins - Taper - Imperial - Extractable - External Thread - Stainless Steel</i> Material: 304 Stainless - Pin Number: 8
12.70 (0.500")	76.20	11.11	TP-127-0762-C	<i>Pins - Taper - Imperial - Standard - Carbon Steel</i> Material: Carbon Steel - Pin Number: 8
12.70 (0.500")	88.90	10.85	TP-127-0889-C	<i>Pins - Taper - Imperial - Standard - Carbon Steel</i> Material: Carbon Steel - Pin Number: 8
12.70 (0.500")	101.60	10.58	TP-127-1016-S4-EE	<i>Pins - Taper - Imperial - Extractable - External Thread - Stainless Steel</i> Material: 304 Stainless - Pin Number: 8
12.70 (0.500")	101.60	10.58	TP-127-1016-C	<i>Pins - Taper - Imperial - Standard - Carbon Steel</i> Material: Carbon Steel - Pin Number: 8
12.70 (0.500")	107.95	10.45	TP-127-1080-C	<i>Pins - Taper - Imperial - Standard - Carbon Steel</i> Material: Carbon Steel - Pin Number: 8
12.70 (0.500")	114.30	10.32	TP-127-1143-S4-EE	<i>Pins - Taper - Imperial - Extractable - External Thread - Stainless Steel</i> Material: 304 Stainless - Pin Number: 8
12.70 (0.500")	114.30	10.32	TP-127-1143-C	<i>Pins - Taper - Imperial - Standard - Carbon Steel</i> Material: Carbon Steel - Pin Number: 8
12.70 (0.500")	127.00	10.05	TP-127-1270-C	<i>Pins - Taper - Imperial - Standard - Carbon Steel</i> Material: Carbon Steel - Pin Number: 8
12.70 (0.500")	139.70	9.79	TP-127-1397-C	<i>Pins - Taper - Imperial - Standard - Carbon Steel</i> Material: Carbon Steel - Pin Number: 8
12.70 (0.500")	152.40	9.53	TP-127-1524-C	<i>Pins - Taper - Imperial - Standard - Carbon Steel</i> Material: Carbon Steel - Pin Number: 8

Usually stocked or Short Delivery
 ** Available while stocks last **

Long Delivery or Large Minimum Quantities
 Not in current production

Imperial Taper Pins

Nom. Large End Diameter (D2) mm (inches)	Length (L) mm	Nom. Small End Diameter (D) mm	Part Number	
12.70 (0.500")	177.80	9.00	TP-127-1778-C	<i>Pins - Taper - Imperial - Standard - Carbon Steel</i> Material: Carbon Steel - Pin Number: 8
12.70 (0.500")	304.80	6.35	TP-127-3048-C	<i>Pins - Taper - Imperial - Standard - Carbon Steel</i> Material: Carbon Steel - Pin Number: 8
15.08 (0.594")	50.80	14.02	TP-151-0508-C	<i>Pins - Taper - Imperial - Standard - Carbon Steel</i> Material: Carbon Steel - Pin Number: 9
15.08 (0.594")	63.50	13.76	TP-151-0635-C	<i>Pins - Taper - Imperial - Standard - Carbon Steel</i> Material: Carbon Steel - Pin Number: 9
15.08 (0.594")	76.20	13.49	TP-151-0762-C	<i>Pins - Taper - Imperial - Standard - Carbon Steel</i> Material: Carbon Steel - Pin Number: 9
15.08 (0.594")	88.90	13.23	TP-151-0889-C	<i>Pins - Taper - Imperial - Standard - Carbon Steel</i> Material: Carbon Steel - Pin Number: 9
15.08 (0.594")	101.60	12.96	TP-151-1016-C	<i>Pins - Taper - Imperial - Standard - Carbon Steel</i> Material: Carbon Steel - Pin Number: 9
15.08 (0.594")	114.30	12.70	TP-151-1143-C	<i>Pins - Taper - Imperial - Standard - Carbon Steel</i> Material: Carbon Steel - Pin Number: 9
15.08 (0.594")	127.00	12.44	TP-151-1270-S4-EE	<i>Pins - Taper - Imperial - Extractable - External Thread - Stainless Steel</i> Material: 304 Stainless - Pin Number: 9
15.08 (0.594")	127.00	12.44	TP-151-1270-C	<i>Pins - Taper - Imperial - Standard - Carbon Steel</i> Material: Carbon Steel - Pin Number: 9
15.08 (0.594")	139.70	12.17	TP-151-1397-C	<i>Pins - Taper - Imperial - Standard - Carbon Steel</i> Material: Carbon Steel - Pin Number: 9
15.08 (0.594")	152.40	11.91	TP-151-1524-S4-EE	<i>Pins - Taper - Imperial - Extractable - External Thread - Stainless Steel</i> Material: 304 Stainless - Pin Number: 9
15.08 (0.594")	152.40	11.91	TP-151-1524-C	<i>Pins - Taper - Imperial - Standard - Carbon Steel</i> Material: Carbon Steel - Pin Number: 9
15.08 (0.594")	177.80	11.38	TP-151-1778-C	<i>Pins - Taper - Imperial - Standard - Carbon Steel</i> Material: Carbon Steel - Pin Number: 9
18.26 (0.719")	152.4	15.08	TP-183-1524-S4	<i>Pins - Taper - Imperial - Standard - Stainless Steel</i> Material: 304 Stainless - Pin Number: 10
18.26 (0.719")	38.10	17.46	TP-183-0381-C	<i>Pins - Taper - Imperial - Standard - Carbon Steel</i> Material: Carbon Steel - Pin Number: 10
18.26 (0.719")	50.80	17.20	TP-183-0508-C	<i>Pins - Taper - Imperial - Standard - Carbon Steel</i> Material: Carbon Steel - Pin Number: 10
18.26 (0.719")	76.20	16.67	TP-183-0762-C	<i>Pins - Taper - Imperial - Standard - Carbon Steel</i> Material: Carbon Steel - Pin Number: 10
18.26 (0.719")	88.90	16.40	TP-183-0889-C	<i>Pins - Taper - Imperial - Standard - Carbon Steel</i> Material: Carbon Steel - Pin Number: 10
18.26 (0.719")	101.60	16.14	TP-183-1016-C	<i>Pins - Taper - Imperial - Standard - Carbon Steel</i> Material: Carbon Steel - Pin Number: 10
18.26 (0.719")	114.30	15.88	TP-183-1143-S4-EE	<i>Pins - Taper - Imperial - Extractable - External Thread - Stainless Steel</i> Material: 304 Stainless - Pin Number: 10
18.26 (0.719")	114.30	15.88	TP-183-1143-C	<i>Pins - Taper - Imperial - Standard - Carbon Steel</i> Material: Carbon Steel - Pin Number: 10
18.26 (0.719")	127.00	15.61	TP-183-1270-C	<i>Pins - Taper - Imperial - Standard - Carbon Steel</i> Material: Carbon Steel - Pin Number: 10
18.26 (0.719")	139.70	15.35	TP-183-1397-C	<i>Pins - Taper - Imperial - Standard - Carbon Steel</i> Material: Carbon Steel - Pin Number: 10
18.26 (0.719")	152.40	15.08	TP-183-1524-S4-EE	<i>Pins - Taper - Imperial - Extractable - External Thread - Stainless Steel</i> Material: 304 Stainless - Pin Number: 10
18.26 (0.719")	152.40	15.08	TP-183-1524-C	<i>Pins - Taper - Imperial - Standard - Carbon Steel</i> Material: Carbon Steel - Pin Number: 10
18.26 (0.719")	177.80	14.55	TP-183-1778-C	<i>Pins - Taper - Imperial - Standard - Carbon Steel</i> Material: Carbon Steel - Pin Number: 10
21.83 (0.859")	152.4	18.70	TP-218-1524-S4	<i>Pins - Taper - Imperial - Standard - Stainless Steel</i> Material: 304 Stainless - Pin Number: 11
21.83 (0.859")	76.20	20.24	TP-218-0762-C	<i>Pins - Taper - Imperial - Standard - Carbon Steel</i> Material: Carbon Steel - Pin Number: 11
21.83 (0.859")	127.00	19.18	TP-218-1270-C	<i>Pins - Taper - Imperial - Standard - Carbon Steel</i> Material: Carbon Steel - Pin Number: 11
21.83 (0.859")	152.40	18.65	TP-218-1524-C	<i>Pins - Taper - Imperial - Standard - Carbon Steel</i> Material: Carbon Steel - Pin Number: 11

Usually stocked or Short Delivery
 ** Available while stocks last **

Long Delivery or Large Minimum Quantities
 Not in current production

Imperial Taper Pins

Nom. Large End Diameter (D2) mm (inches)	Length (L) mm	Nom. Small End Diameter (D) mm	Part Number	
21.83 (0.859")	203.20	17.59	TP-218-2032-C	<i>Pins - Taper - Imperial - Standard - Carbon Steel</i> Material: Carbon Steel - Pin Number: 11
21.83 (0.859")	228.60	17.07	TP-218-2286-C	<i>Pins - Taper - Imperial - Standard - Carbon Steel</i> Material: Carbon Steel - Pin Number: 11
21.83 (0.859")	304.80	15.48	TP-218-3048-C	<i>Pins - Taper - Imperial - Standard - Carbon Steel</i> Material: Carbon Steel - Pin Number: 11
26.19 (1.031")	127.00	23.55	TP-262-1270-C	<i>Pins - Taper - Imperial - Standard - Carbon Steel</i> Material: Carbon Steel - Pin Number: 12
26.19 (1.031")	152.40	23.02	TP-262-1524-C	<i>Pins - Taper - Imperial - Standard - Carbon Steel</i> Material: Carbon Steel - Pin Number: 12
26.19 (1.031")	203.20	21.96	TP-262-2032-C	<i>Pins - Taper - Imperial - Standard - Carbon Steel</i> Material: Carbon Steel - Pin Number: 12
26.19 (1.031")	304.80	19.84	TP-262-3048-C	<i>Pins - Taper - Imperial - Standard - Carbon Steel</i> Material: Carbon Steel - Pin Number: 12
31.35 (1.234")	152.40	28.18	TP-314-1524-C	<i>Pins - Taper - Imperial - Standard - Carbon Steel</i> Material: Carbon Steel - Pin Number: 13
31.35 (1.234")	304.80	25.00	TP-314-3048-C	<i>Pins - Taper - Imperial - Standard - Carbon Steel</i> Material: Carbon Steel - Pin Number: 13
38.50 (1.516")	304.80	32.15	TP-385-3048-C	<i>Pins - Taper - Imperial - Standard - Carbon Steel</i> Material: Carbon Steel - Pin Number: 14

Metric Taper Pins

Nom. Small End Diameter (D) mm (inches)	Length (L) mm	Nom. Large End Diameter (D2) mm	Part Number	
1.00 (0.039")	8.00	1.16	TPM-0100-00800-4	<i>Pins - Taper - Metric - Stainless Steel</i> Material: 304 Stainless
1.00 (0.039")	8.00	1.16	TPM-0100-00800-M	<i>Pins - Taper - Metric - Carbon Steel</i> Material: Carbon Steel
1.00 (0.039")	10.00	1.20	TPM-0100-01000-4	<i>Pins - Taper - Metric - Stainless Steel</i> Material: 304 Stainless
1.00 (0.039")	10.00	1.20	TPM-0100-01000-M	<i>Pins - Taper - Metric - Carbon Steel</i> Material: Carbon Steel
1.00 (0.039")	12.00	1.24	TPM-0100-01200-4	<i>Pins - Taper - Metric - Stainless Steel</i> Material: 304 Stainless
1.00 (0.039")	12.00	1.24	TPM-0100-01200-M	<i>Pins - Taper - Metric - Carbon Steel</i> Material: Carbon Steel
1.00 (0.039")	14.00	1.28	TPM-0100-01400-4	<i>Pins - Taper - Metric - Stainless Steel</i> Material: 304 Stainless
1.00 (0.039")	14.00	1.28	TPM-0100-01400-M	<i>Pins - Taper - Metric - Carbon Steel</i> Material: Carbon Steel
1.00 (0.039")	16.00	1.32	TPM-0100-01600-4	<i>Pins - Taper - Metric - Stainless Steel</i> Material: 304 Stainless
1.00 (0.039")	16.00	1.32	TPM-0100-01600-M	<i>Pins - Taper - Metric - Carbon Steel</i> Material: Carbon Steel
1.00 (0.039")	18.00	1.36	TPM-0100-01800-4	<i>Pins - Taper - Metric - Stainless Steel</i> Material: 304 Stainless
1.00 (0.039")	18.00	1.36	TPM-0100-01800-M	<i>Pins - Taper - Metric - Carbon Steel</i> Material: Carbon Steel
1.50 (0.059")	6.00	1.62	TPM-0150-00600-M	<i>Pins - Taper - Metric - Carbon Steel</i> Material: Carbon Steel
1.50 (0.059")	8.00	1.66	TPM-0150-00800-M	<i>Pins - Taper - Metric - Carbon Steel</i> Material: Carbon Steel
1.50 (0.059")	10.00	1.70	** TPM-0150-01000-4	<i>Pins - Taper - Metric - Stainless Steel</i> Material: 303 Stainless Steel
1.50 (0.059")	10.00	1.70	TPM-0150-01000-M	<i>Pins - Taper - Metric - Carbon Steel</i> Material: Carbon Steel
1.50 (0.059")	12.00	1.74	TPM-0150-01200-4	<i>Pins - Taper - Metric - Stainless Steel</i> Material: 304 Stainless
1.50 (0.059")	12.00	1.74	TPM-0150-01200-M	<i>Pins - Taper - Metric - Carbon Steel</i> Material: Carbon Steel
1.50 (0.059")	14.00	1.78	TPM-0150-01400-4	<i>Pins - Taper - Metric - Stainless Steel</i> Material: 304 Stainless

Usually stocked or Short Delivery
** Available while stocks last **

Long Delivery or Large Minimum Quantities
Not in current production

Metric Taper Pins

Nom. Small End Diameter (D) mm (inches)	Length (L) mm	Nom. Large End Diameter (D2) mm	Part Number		
1.50 (0.059")	14.00	1.78	TPM-0150-01400-M	<i>Pins - Taper - Metric - Carbon Steel</i>	Material: Carbon Steel
1.50 (0.059")	16.00	1.82	TPM-0150-01600-4	<i>Pins - Taper - Metric - Stainless Steel</i>	Material: 304 Stainless
1.50 (0.059")	16.00	1.82	TPM-0150-01600-M	<i>Pins - Taper - Metric - Carbon Steel</i>	Material: Carbon Steel
1.50 (0.059")	18.00	1.86	TPM-0150-01800-4	<i>Pins - Taper - Metric - Stainless Steel</i>	Material: 304 Stainless
1.50 (0.059")	18.00	1.86	TPM-0150-01800-M	<i>Pins - Taper - Metric - Carbon Steel</i>	Material: Carbon Steel
1.50 (0.059")	20.00	1.90	TPM-0150-02000-4	<i>Pins - Taper - Metric - Stainless Steel</i>	Material: 304 Stainless
1.50 (0.059")	20.00	1.90	TPM-0150-02000-M	<i>Pins - Taper - Metric - Carbon Steel</i>	Material: Carbon Steel
1.50 (0.059")	22.00	1.94	TPM-0150-02200-M	<i>Pins - Taper - Metric - Carbon Steel</i>	Material: Carbon Steel
1.50 (0.059")	24.00	1.98	TPM-0150-02400-M	<i>Pins - Taper - Metric - Carbon Steel</i>	Material: Carbon Steel
1.50 (0.059")	26.00	2.02	TPM-0150-02600-M	<i>Pins - Taper - Metric - Carbon Steel</i>	Material: Carbon Steel
2.00 (0.079")	6.00	2.12	TPM-0200-00600-M	<i>Pins - Taper - Metric - Carbon Steel</i>	Material: Carbon Steel
2.00 (0.079")	8.00	2.16	TPM-0200-00800-M	<i>Pins - Taper - Metric - Carbon Steel</i>	Material: Carbon Steel
2.00 (0.079")	10.00	2.20	TPM-0200-01000-4	<i>Pins - Taper - Metric - Stainless Steel</i>	Material: 304 Stainless
2.00 (0.079")	10.00	2.20	TPM-0200-01000-M	<i>Pins - Taper - Metric - Carbon Steel</i>	Material: Carbon Steel
2.00 (0.079")	12.00	2.24	** TPM-0200-01200-4	<i>Pins - Taper - Metric - Stainless Steel</i>	Material: 303 Stainless Steel
2.00 (0.079")	12.00	2.24	TPM-0200-01200-M	<i>Pins - Taper - Metric - Carbon Steel</i>	Material: Carbon Steel
2.00 (0.079")	14.00	2.28	TPM-0200-01400-4	<i>Pins - Taper - Metric - Stainless Steel</i>	Material: 304 Stainless
2.00 (0.079")	14.00	2.28	TPM-0200-01400-M	<i>Pins - Taper - Metric - Carbon Steel</i>	Material: Carbon Steel
2.00 (0.079")	16.00	2.32	TPM-0200-01600-4	<i>Pins - Taper - Metric - Stainless Steel</i>	Material: 304 Stainless
2.00 (0.079")	16.00	2.32	TPM-0200-01600-M	<i>Pins - Taper - Metric - Carbon Steel</i>	Material: Carbon Steel
2.00 (0.079")	18.00	2.36	TPM-0200-01800-4	<i>Pins - Taper - Metric - Stainless Steel</i>	Material: 304 Stainless
2.00 (0.079")	18.00	2.36	TPM-0200-01800-M	<i>Pins - Taper - Metric - Carbon Steel</i>	Material: Carbon Steel
2.00 (0.079")	20.00	2.40	TPM-0200-02000-4	<i>Pins - Taper - Metric - Stainless Steel</i>	Material: 304 Stainless
2.00 (0.079")	20.00	2.40	TPM-0200-02000-M	<i>Pins - Taper - Metric - Carbon Steel</i>	Material: Carbon Steel
2.00 (0.079")	22.00	2.44	TPM-0200-02200-M	<i>Pins - Taper - Metric - Carbon Steel</i>	Material: Carbon Steel
2.00 (0.079")	24.00	2.48	TPM-0200-02400-4	<i>Pins - Taper - Metric - Stainless Steel</i>	Material: 304 Stainless
2.00 (0.079")	24.00	2.48	TPM-0200-02400-M	<i>Pins - Taper - Metric - Carbon Steel</i>	Material: Carbon Steel
2.00 (0.079")	26.00	2.52	TPM-0200-02600-4	<i>Pins - Taper - Metric - Stainless Steel</i>	Material: 304 Stainless
2.00 (0.079")	26.00	2.52	TPM-0200-02600-M	<i>Pins - Taper - Metric - Carbon Steel</i>	Material: Carbon Steel
2.00 (0.079")	28.00	2.56	TPM-0200-02800-4	<i>Pins - Taper - Metric - Stainless Steel</i>	Material: 304 Stainless
2.00 (0.079")	28.00	2.56	TPM-0200-02800-M	<i>Pins - Taper - Metric - Carbon Steel</i>	Material: Carbon Steel

Usually stocked or Short Delivery
 ** Available while stocks last **

Long Delivery or Large Minimum Quantities
 Not in current production

Metric Taper Pins

Nom. Small End Diameter (D) mm (inches)	Length (L) mm	Nom. Large End Diameter (D2) mm	Part Number		
2.00 (0.079")	30.00	2.60	TPM-0200-03000-4	<i>Pins - Taper - Metric - Stainless Steel</i>	Material: 304 Stainless
2.00 (0.079")	30.00	2.60	TPM-0200-03000-M	<i>Pins - Taper - Metric - Carbon Steel</i>	Material: Carbon Steel
2.00 (0.079")	40.00	2.80	TPM-0200-04000-4	<i>Pins - Taper - Metric - Stainless Steel</i>	Material: 304 Stainless
2.00 (0.079")	50.00	3.00	TPM-0200-05000-4	<i>Pins - Taper - Metric - Stainless Steel</i>	Material: 304 Stainless
2.50 (0.098")	6.00	2.62	TPM-0250-00600-M	<i>Pins - Taper - Metric - Carbon Steel</i>	Material: Carbon Steel
2.50 (0.098")	8.00	2.66	TPM-0250-00800-M	<i>Pins - Taper - Metric - Carbon Steel</i>	Material: Carbon Steel
2.50 (0.098")	10.00	2.70	TPM-0250-01000-M	<i>Pins - Taper - Metric - Carbon Steel</i>	Material: Carbon Steel
2.50 (0.098")	12.00	2.74	TPM-0250-01200-M	<i>Pins - Taper - Metric - Carbon Steel</i>	Material: Carbon Steel
2.50 (0.098")	14.00	2.78	TPM-0250-01400-M	<i>Pins - Taper - Metric - Carbon Steel</i>	Material: Carbon Steel
2.50 (0.098")	16.00	2.82	TPM-0250-01600-4	<i>Pins - Taper - Metric - Stainless Steel</i>	Material: 304 Stainless
2.50 (0.098")	16.00	2.82	TPM-0250-01600-M	<i>Pins - Taper - Metric - Carbon Steel</i>	Material: Carbon Steel
2.50 (0.098")	18.00	2.86	TPM-0250-01800-4	<i>Pins - Taper - Metric - Stainless Steel</i>	Material: 304 Stainless
2.50 (0.098")	18.00	2.86	TPM-0250-01800-M	<i>Pins - Taper - Metric - Carbon Steel</i>	Material: Carbon Steel
2.50 (0.098")	20.00	2.90	TPM-0250-02000-4	<i>Pins - Taper - Metric - Stainless Steel</i>	Material: 304 Stainless
2.50 (0.098")	20.00	2.90	TPM-0250-02000-M	<i>Pins - Taper - Metric - Carbon Steel</i>	Material: Carbon Steel
2.50 (0.098")	22.00	2.94	TPM-0250-02200-M	<i>Pins - Taper - Metric - Carbon Steel</i>	Material: Carbon Steel
2.50 (0.098")	24.00	2.98	TPM-0250-02400-4	<i>Pins - Taper - Metric - Stainless Steel</i>	Material: 304 Stainless
2.50 (0.098")	24.00	2.98	TPM-0250-02400-M	<i>Pins - Taper - Metric - Carbon Steel</i>	Material: Carbon Steel
2.50 (0.098")	26.00	3.02	TPM-0250-02600-4	<i>Pins - Taper - Metric - Stainless Steel</i>	Material: 304 Stainless
2.50 (0.098")	26.00	3.02	TPM-0250-02600-M	<i>Pins - Taper - Metric - Carbon Steel</i>	Material: Carbon Steel
2.50 (0.098")	28.00	3.06	TPM-0250-02800-M	<i>Pins - Taper - Metric - Carbon Steel</i>	Material: Carbon Steel
2.50 (0.098")	30.00	3.10	TPM-0250-03000-4	<i>Pins - Taper - Metric - Stainless Steel</i>	Material: 304 Stainless
2.50 (0.098")	30.00	3.10	TPM-0250-03000-M	<i>Pins - Taper - Metric - Carbon Steel</i>	Material: Carbon Steel
2.50 (0.098")	32.00	3.14	TPM-0250-03200-M	<i>Pins - Taper - Metric - Carbon Steel</i>	Material: Carbon Steel
2.50 (0.098")	36.00	3.22	TPM-0250-03600-4	<i>Pins - Taper - Metric - Stainless Steel</i>	Material: 304 Stainless
2.50 (0.098")	36.00	3.22	TPM-0250-03600-M	<i>Pins - Taper - Metric - Carbon Steel</i>	Material: Carbon Steel
2.50 (0.098")	40.00	3.30	TPM-0250-04000-4	<i>Pins - Taper - Metric - Stainless Steel</i>	Material: 304 Stainless
2.50 (0.098")	40.00	3.30	TPM-0250-04000-M	<i>Pins - Taper - Metric - Carbon Steel</i>	Material: Carbon Steel
3.00 (0.118")	6.00	3.12	TPM-0300-00600-M	<i>Pins - Taper - Metric - Carbon Steel</i>	Material: Carbon Steel
3.00 (0.118")	8.00	3.16	TPM-0300-00800-M	<i>Pins - Taper - Metric - Carbon Steel</i>	Material: Carbon Steel
3.00 (0.118")	10.00	3.20	TPM-0300-01000-M	<i>Pins - Taper - Metric - Carbon Steel</i>	Material: Carbon Steel

Usually stocked or Short Delivery
 ** Available while stocks last **

Long Delivery or Large Minimum Quantities
 Not in current production

Metric Taper Pins

Nom. Small End Diameter (D) mm (inches)	Length (L) mm	Nom. Large End Diameter (D2) mm	Part Number		
3.00 (0.118")	12.00	3.24	TPM-0300-01200-4	<i>Pins - Taper - Metric - Stainless Steel</i>	Material: 304 Stainless
3.00 (0.118")	12.00	3.24	TPM-0300-01200-M	<i>Pins - Taper - Metric - Carbon Steel</i>	Material: Carbon Steel
3.00 (0.118")	14.00	3.28	TPM-0300-01400-4	<i>Pins - Taper - Metric - Stainless Steel</i>	Material: 304 Stainless
3.00 (0.118")	14.00	3.28	TPM-0300-01400-M	<i>Pins - Taper - Metric - Carbon Steel</i>	Material: Carbon Steel
3.00 (0.118")	16.00	3.32	TPM-0300-01600-4	<i>Pins - Taper - Metric - Stainless Steel</i>	Material: 304 Stainless
3.00 (0.118")	16.00	3.32	TPM-0300-01600-M	<i>Pins - Taper - Metric - Carbon Steel</i>	Material: Carbon Steel
3.00 (0.118")	18.00	3.36	TPM-0300-01800-4	<i>Pins - Taper - Metric - Stainless Steel</i>	Material: 304 Stainless
3.00 (0.118")	18.00	3.36	TPM-0300-01800-M	<i>Pins - Taper - Metric - Carbon Steel</i>	Material: Carbon Steel
3.00 (0.118")	20.00	3.40	TPM-0300-02000-4	<i>Pins - Taper - Metric - Stainless Steel</i>	Material: 304 Stainless
3.00 (0.118")	20.00	3.40	TPM-0300-02000-M	<i>Pins - Taper - Metric - Carbon Steel</i>	Material: Carbon Steel
3.00 (0.118")	22.00	3.44	TPM-0300-02200-M	<i>Pins - Taper - Metric - Carbon Steel</i>	Material: Carbon Steel
3.00 (0.118")	24.00	3.48	TPM-0300-02400-4	<i>Pins - Taper - Metric - Stainless Steel</i>	Material: 304 Stainless
3.00 (0.118")	24.00	3.48	TPM-0300-02400-M	<i>Pins - Taper - Metric - Carbon Steel</i>	Material: Carbon Steel
3.00 (0.118")	26.00	3.52	TPM-0300-02600-4	<i>Pins - Taper - Metric - Stainless Steel</i>	Material: 304 Stainless
3.00 (0.118")	26.00	3.52	TPM-0300-02600-M	<i>Pins - Taper - Metric - Carbon Steel</i>	Material: Carbon Steel
3.00 (0.118")	28.00	3.56	TPM-0300-02800-M	<i>Pins - Taper - Metric - Carbon Steel</i>	Material: Carbon Steel
3.00 (0.118")	30.00	3.60	TPM-0300-03000-4	<i>Pins - Taper - Metric - Stainless Steel</i>	Material: 304 Stainless
3.00 (0.118")	30.00	3.60	TPM-0300-03000-M	<i>Pins - Taper - Metric - Carbon Steel</i>	Material: Carbon Steel
3.00 (0.118")	32.00	3.64	TPM-0300-03200-M	<i>Pins - Taper - Metric - Carbon Steel</i>	Material: Carbon Steel
3.00 (0.118")	36.00	3.72	TPM-0300-03600-4	<i>Pins - Taper - Metric - Stainless Steel</i>	Material: 304 Stainless
3.00 (0.118")	36.00	3.72	TPM-0300-03600-M	<i>Pins - Taper - Metric - Carbon Steel</i>	Material: Carbon Steel
3.00 (0.118")	40.00	3.80	TPM-0300-04000-4	<i>Pins - Taper - Metric - Stainless Steel</i>	Material: 304 Stainless
3.00 (0.118")	40.00	3.80	TPM-0300-04000-M	<i>Pins - Taper - Metric - Carbon Steel</i>	Material: Carbon Steel
3.00 (0.118")	45.00	3.90	TPM-0300-04500-M	<i>Pins - Taper - Metric - Carbon Steel</i>	Material: Carbon Steel
3.00 (0.118")	50.00	4.00	TPM-0300-05000-4	<i>Pins - Taper - Metric - Stainless Steel</i>	Material: 304 Stainless
3.00 (0.118")	50.00	4.00	TPM-0300-05000-M	<i>Pins - Taper - Metric - Carbon Steel</i>	Material: Carbon Steel
3.00 (0.118")	60.00	4.20	TPM-0300-06000-M	<i>Pins - Taper - Metric - Carbon Steel</i>	Material: Carbon Steel
4.00 (0.157")	6.00	4.12	TPM-0400-00600-M	<i>Pins - Taper - Metric - Carbon Steel</i>	Material: Carbon Steel
4.00 (0.157")	8.00	4.16	TPM-0400-00800-M	<i>Pins - Taper - Metric - Carbon Steel</i>	Material: Carbon Steel
4.00 (0.157")	10.00	4.20	** TPM-0400-01000-M	<i>Pins - Taper - Metric - Carbon Steel</i>	Material: Carbon Steel
4.00 (0.157")	12.00	4.24	TPM-0400-01200-M	<i>Pins - Taper - Metric - Carbon Steel</i>	Material: Carbon Steel

Usually stocked or Short Delivery
 ** Available while stocks last **

Long Delivery or Large Minimum Quantities
 Not in current production

Metric Taper Pins

Nom. Small End Diameter (D) mm (inches)	Length (L) mm	Nom. Large End Diameter (D2) mm	Part Number		
4.00 (0.157")	14.00	4.28	TPM-0400-01400-M	<i>Pins - Taper - Metric - Carbon Steel</i>	Material: Carbon Steel
4.00 (0.157")	16.00	4.32	TPM-0400-01600-4	<i>Pins - Taper - Metric - Stainless Steel</i>	Material: 304 Stainless
4.00 (0.157")	16.00	4.32	TPM-0400-01600-M	<i>Pins - Taper - Metric - Carbon Steel</i>	Material: Carbon Steel
4.00 (0.157")	18.00	4.36	TPM-0400-01800-M	<i>Pins - Taper - Metric - Carbon Steel</i>	Material: Carbon Steel
4.00 (0.157")	20.00	4.40	TPM-0400-02000-4	<i>Pins - Taper - Metric - Stainless Steel</i>	Material: 304 Stainless
4.00 (0.157")	20.00	4.40	TPM-0400-02000-M	<i>Pins - Taper - Metric - Carbon Steel</i>	Material: Carbon Steel
4.00 (0.157")	22.00	4.44	TPM-0400-02200-M	<i>Pins - Taper - Metric - Carbon Steel</i>	Material: Carbon Steel
4.00 (0.157")	24.00	4.48	TPM-0400-02400-4	<i>Pins - Taper - Metric - Stainless Steel</i>	Material: 304 Stainless
4.00 (0.157")	24.00	4.48	** TPM-0400-02400-M	<i>Pins - Taper - Metric - Carbon Steel</i>	Material: Carbon Steel
4.00 (0.157")	26.00	4.52	TPM-0400-02600-4	<i>Pins - Taper - Metric - Stainless Steel</i>	Material: 304 Stainless
4.00 (0.157")	26.00	4.52	TPM-0400-02600-M	<i>Pins - Taper - Metric - Carbon Steel</i>	Material: Carbon Steel
4.00 (0.157")	28.00	4.56	TPM-0400-02800-M	<i>Pins - Taper - Metric - Carbon Steel</i>	Material: Carbon Steel
4.00 (0.157")	30.00	4.60	TPM-0400-03000-4	<i>Pins - Taper - Metric - Stainless Steel</i>	Material: 304 Stainless
4.00 (0.157")	30.00	4.60	TPM-0400-03000-M	<i>Pins - Taper - Metric - Carbon Steel</i>	Material: Carbon Steel
4.00 (0.157")	32.00	4.64	TPM-0400-03200-M	<i>Pins - Taper - Metric - Carbon Steel</i>	Material: Carbon Steel
4.00 (0.157")	36.00	4.72	TPM-0400-03600-4	<i>Pins - Taper - Metric - Stainless Steel</i>	Material: 304 Stainless
4.00 (0.157")	36.00	4.72	TPM-0400-03600-M	<i>Pins - Taper - Metric - Carbon Steel</i>	Material: Carbon Steel
4.00 (0.157")	40.00	4.80	TPM-0400-04000-4	<i>Pins - Taper - Metric - Stainless Steel</i>	Material: 304 Stainless
4.00 (0.157")	40.00	4.80	TPM-0400-04000-M	<i>Pins - Taper - Metric - Carbon Steel</i>	Material: Carbon Steel
4.00 (0.157")	45.00	4.90	TPM-0400-04500-4	<i>Pins - Taper - Metric - Stainless Steel</i>	Material: 304 Stainless
4.00 (0.157")	45.00	4.90	TPM-0400-04500-M	<i>Pins - Taper - Metric - Carbon Steel</i>	Material: Carbon Steel
4.00 (0.157")	50.00	5.00	TPM-0400-05000-4	<i>Pins - Taper - Metric - Stainless Steel</i>	Material: 304 Stainless
4.00 (0.157")	50.00	5.00	TPM-0400-05000-M	<i>Pins - Taper - Metric - Carbon Steel</i>	Material: Carbon Steel
4.00 (0.157")	60.00	5.20	TPM-0400-06000-4	<i>Pins - Taper - Metric - Stainless Steel</i>	Material: 304 Stainless
4.00 (0.157")	60.00	5.20	TPM-0400-06000-M	<i>Pins - Taper - Metric - Carbon Steel</i>	Material: Carbon Steel
5.00 (0.197")	10.00	5.20	TPM-0500-01000-M	<i>Pins - Taper - Metric - Carbon Steel</i>	Material: Carbon Steel
5.00 (0.197")	12.00	5.24	TPM-0500-01200-M	<i>Pins - Taper - Metric - Carbon Steel</i>	Material: Carbon Steel
5.00 (0.197")	14.00	5.28	TPM-0500-01400-M	<i>Pins - Taper - Metric - Carbon Steel</i>	Material: Carbon Steel
5.00 (0.197")	16.00	5.32	TPM-0500-01600-M	<i>Pins - Taper - Metric - Carbon Steel</i>	Material: Carbon Steel
5.00 (0.197")	18.00	5.36	TPM-0500-01800-M	<i>Pins - Taper - Metric - Carbon Steel</i>	Material: Carbon Steel
5.00 (0.197")	20.00	5.40	TPM-0500-02000-M	<i>Pins - Taper - Metric - Carbon Steel</i>	Material: Carbon Steel

Usually stocked or Short Delivery
 ** Available while stocks last **

Long Delivery or Large Minimum Quantities
 Not in current production

Metric Taper Pins

Nom. Small End Diameter (D) mm (inches)	Length (L) mm	Nom. Large End Diameter (D2) mm	Part Number		
5.00 (0.197")	22.00	5.44	TPM-0500-02200-M	<i>Pins - Taper - Metric - Carbon Steel</i>	Material: Carbon Steel
5.00 (0.197")	24.00	5.48	TPM-0500-02400-M	<i>Pins - Taper - Metric - Carbon Steel</i>	Material: Carbon Steel
5.00 (0.197")	26.00	5.52	TPM-0500-02600-M	<i>Pins - Taper - Metric - Carbon Steel</i>	Material: Carbon Steel
5.00 (0.197")	28.00	5.56	TPM-0500-02800-M	<i>Pins - Taper - Metric - Carbon Steel</i>	Material: Carbon Steel
5.00 (0.197")	30.00	5.60	TPM-0500-03000-M	<i>Pins - Taper - Metric - Carbon Steel</i>	Material: Carbon Steel
5.00 (0.197")	32.00	5.64	TPM-0500-03200-M	<i>Pins - Taper - Metric - Carbon Steel</i>	Material: Carbon Steel
5.00 (0.197")	36.00	5.72	TPM-0500-03600-M	<i>Pins - Taper - Metric - Carbon Steel</i>	Material: Carbon Steel
5.00 (0.197")	40.00	5.80	TPM-0500-04000-M	<i>Pins - Taper - Metric - Carbon Steel</i>	Material: Carbon Steel
5.00 (0.197")	45.00	5.90	TPM-0500-04500-M	<i>Pins - Taper - Metric - Carbon Steel</i>	Material: Carbon Steel
5.00 (0.197")	50.00	6.00	TPM-0500-05000-M	<i>Pins - Taper - Metric - Carbon Steel</i>	Material: Carbon Steel
6.00 (0.236")	10.00	6.20	TPM-0600-01000-M	<i>Pins - Taper - Metric - Carbon Steel</i>	Material: Carbon Steel
6.00 (0.236")	12.00	6.24	TPM-0600-01200-M	<i>Pins - Taper - Metric - Carbon Steel</i>	Material: Carbon Steel
6.00 (0.236")	14.00	6.28	TPM-0600-01400-M	<i>Pins - Taper - Metric - Carbon Steel</i>	Material: Carbon Steel
6.00 (0.236")	16.00	6.32	TPM-0600-01600-EI	<i>Pins - Taper - Metric - Extractable - Internal Thread</i>	Material: Carbon Steel
6.00 (0.236")	16.00	6.32	TPM-0600-01600-M	<i>Pins - Taper - Metric - Carbon Steel</i>	Material: Carbon Steel
6.00 (0.236")	18.00	6.36	TPM-0600-01800-M	<i>Pins - Taper - Metric - Carbon Steel</i>	Material: Carbon Steel
6.00 (0.236")	18.00	6.36	TPM-0600-01800-EI	<i>Pins - Taper - Metric - Extractable - Internal Thread</i>	Material: Carbon Steel
6.00 (0.236")	20.00	6.40	TPM-0600-02000-EI	<i>Pins - Taper - Metric - Extractable - Internal Thread</i>	Material: Carbon Steel
6.00 (0.236")	20.00	6.40	TPM-0600-02000-M	<i>Pins - Taper - Metric - Carbon Steel</i>	Material: Carbon Steel
6.00 (0.236")	22.00	6.44	TPM-0600-02200-M	<i>Pins - Taper - Metric - Carbon Steel</i>	Material: Carbon Steel
6.00 (0.236")	24.00	6.48	TPM-0600-02400-EI	<i>Pins - Taper - Metric - Extractable - Internal Thread</i>	Material: Carbon Steel
6.00 (0.236")	24.00	6.48	TPM-0600-02400-M	<i>Pins - Taper - Metric - Carbon Steel</i>	Material: Carbon Steel
6.00 (0.236")	25.00	6.50	TPM-0600-02500-S416	<i>Pins - Taper - Metric - Stainless Steel</i>	Material: 416 Stainless Steel
6.00 (0.236")	26.00	6.52	TPM-0600-02600-EI	<i>Pins - Taper - Metric - Extractable - Internal Thread</i>	Material: Carbon Steel
6.00 (0.236")	28.00	6.56	TPM-0600-02800-M	<i>Pins - Taper - Metric - Carbon Steel</i>	Material: Carbon Steel
6.00 (0.236")	28.00	6.56	TPM-0600-02800-EI	<i>Pins - Taper - Metric - Extractable - Internal Thread</i>	Material: Carbon Steel
6.00 (0.236")	30.00	6.50	TPM-0600-03000-S416	<i>Pins - Taper - Metric - Stainless Steel</i>	Material: 416 Stainless Steel
6.00 (0.236")	30.00	6.60	TPM-0600-03000-EI	<i>Pins - Taper - Metric - Extractable - Internal Thread</i>	Material: Carbon Steel
6.00 (0.236")	30.00	6.60	TPM-0600-03000-M	<i>Pins - Taper - Metric - Carbon Steel</i>	Material: Carbon Steel
6.00 (0.236")	32.00	6.64	TPM-0600-03200-EI	<i>Pins - Taper - Metric - Extractable - Internal Thread</i>	Material: Carbon Steel
6.00 (0.236")	32.00	6.64	TPM-0600-03200-M	<i>Pins - Taper - Metric - Carbon Steel</i>	Material: Carbon Steel

Usually stocked or Short Delivery
 ** Available while stocks last **

Long Delivery or Large Minimum Quantities
 Not in current production

Metric Taper Pins

Nom. Small End Diameter (D) mm (inches)	Length (L) mm	Nom. Large End Diameter (D2) mm	Part Number	
6.00 (0.236")	35.00	6.70	TPM-0600-03500-S416	<i>Pins - Taper - Metric - Stainless Steel</i> Material: 416 Stainless Steel
6.00 (0.236")	36.00	6.72	TPM-0600-03600-EI	<i>Pins - Taper - Metric - Extractable - Internal Thread</i> Material: Carbon Steel
6.00 (0.236")	36.00	6.72	TPM-0600-03600-M	<i>Pins - Taper - Metric - Carbon Steel</i> Material: Carbon Steel
6.00 (0.236")	40.00	6.80	TPM-0600-04000-M	<i>Pins - Taper - Metric - Carbon Steel</i> Material: Carbon Steel
6.00 (0.236")	40.00	6.80	TPM-0600-04000-EI	<i>Pins - Taper - Metric - Extractable - Internal Thread</i> Material: Carbon Steel
6.00 (0.236")	45.00	6.90	TPM-0600-04500-M	<i>Pins - Taper - Metric - Carbon Steel</i> Material: Carbon Steel
6.00 (0.236")	45.00	6.90	TPM-0600-04500-EI	<i>Pins - Taper - Metric - Extractable - Internal Thread</i> Material: Carbon Steel
6.00 (0.236")	50.00	7.00	TPM-0600-05000-EI	<i>Pins - Taper - Metric - Extractable - Internal Thread</i> Material: Carbon Steel
6.00 (0.236")	50.00	7.00	TPM-0600-05000-M	<i>Pins - Taper - Metric - Carbon Steel</i> Material: Carbon Steel
6.00 (0.236")	55.00	7.10	TPM-0600-05500-EI	<i>Pins - Taper - Metric - Extractable - Internal Thread</i> Material: Carbon Steel
6.00 (0.236")	55.00	7.10	TPM-0600-05500-M	<i>Pins - Taper - Metric - Carbon Steel</i> Material: Carbon Steel
6.00 (0.236")	60.00	7.20	TPM-0600-06000-M	<i>Pins - Taper - Metric - Carbon Steel</i> Material: Carbon Steel
6.00 (0.236")	60.00	7.20	TPM-0600-06000-EE	<i>Pins - Taper - Metric - Extractable - External Thread</i> Material: Carbon Steel
6.00 (0.236")	60.00	7.20	TPM-0600-06000-EI	<i>Pins - Taper - Metric - Extractable - Internal Thread</i> Material: Carbon Steel
6.00 (0.236")	70.00	7.40	TPM-0600-07000-EI	<i>Pins - Taper - Metric - Extractable - Internal Thread</i> Material: Carbon Steel
6.00 (0.236")	80.00	7.60	TPM-0600-08000-EI	<i>Pins - Taper - Metric - Extractable - Internal Thread</i> Material: Carbon Steel
6.00 (0.236")	90.00	7.80	TPM-0600-09000-EI	<i>Pins - Taper - Metric - Extractable - Internal Thread</i> Material: Carbon Steel
6.00 (0.236")	100.00	8.00	TPM-0600-10000-M	<i>Pins - Taper - Metric - Carbon Steel</i> Material: Carbon Steel
8.00 (0.315")	20.00	8.40	TPM-0800-02000-3	<i>Pins - Taper - Metric - Stainless Steel</i> Material: 303 Stainless Steel
8.00 (0.315")	20.00	8.40	TPM-0800-02000-EI	<i>Pins - Taper - Metric - Extractable - Internal Thread</i> Material: Carbon Steel
8.00 (0.315")	20.00	8.40	TPM-0800-02000-M	<i>Pins - Taper - Metric - Carbon Steel</i> Material: Carbon Steel
8.00 (0.315")	22.00	8.44	TPM-0800-02200-M	<i>Pins - Taper - Metric - Carbon Steel</i> Material: Carbon Steel
8.00 (0.315")	24.00	8.48	TPM-0800-02400-EI	<i>Pins - Taper - Metric - Extractable - Internal Thread</i> Material: Carbon Steel
8.00 (0.315")	24.00	8.48	TPM-0800-02400-M	<i>Pins - Taper - Metric - Carbon Steel</i> Material: Carbon Steel
8.00 (0.315")	26.00	8.52	TPM-0800-02600-EI	<i>Pins - Taper - Metric - Extractable - Internal Thread</i> Material: Carbon Steel
8.00 (0.315")	28.00	8.56	TPM-0800-02800-EI	<i>Pins - Taper - Metric - Extractable - Internal Thread</i> Material: Carbon Steel
8.00 (0.315")	28.00	8.56	TPM-0800-02800-M	<i>Pins - Taper - Metric - Carbon Steel</i> Material: Carbon Steel
8.00 (0.315")	30.00	8.60	TPM-0800-03000-EI	<i>Pins - Taper - Metric - Extractable - Internal Thread</i> Material: Carbon Steel
8.00 (0.315")	30.00	8.60	TPM-0800-03000-M	<i>Pins - Taper - Metric - Carbon Steel</i> Material: Carbon Steel
8.00 (0.315")	32.00	8.64	TPM-0800-03200-EI	<i>Pins - Taper - Metric - Extractable - Internal Thread</i> Material: Carbon Steel
8.00 (0.315")	32.00	8.64	TPM-0800-03200-M	<i>Pins - Taper - Metric - Carbon Steel</i> Material: Carbon Steel

Usually stocked or Short Delivery
 ** Available while stocks last **

Long Delivery or Large Minimum Quantities
 Not in current production

Metric Taper Pins

Nom. Small End Diameter (D) mm (inches)	Length (L) mm	Nom. Large End Diameter (D2) mm	Part Number		
8.00 (0.315")	36.00	8.72	TPM-0800-03600-EI	<i>Pins - Taper - Metric - Extractable - Internal Thread</i>	Material: Carbon Steel
8.00 (0.315")	36.00	8.72	TPM-0800-03600-M	<i>Pins - Taper - Metric - Carbon Steel</i>	Material: Carbon Steel
8.00 (0.315")	40.00	8.80	TPM-0800-04000-EI	<i>Pins - Taper - Metric - Extractable - Internal Thread</i>	Material: Carbon Steel
8.00 (0.315")	40.00	8.80	TPM-0800-04000-M	<i>Pins - Taper - Metric - Carbon Steel</i>	Material: Carbon Steel
8.00 (0.315")	40.00	8.80	TPM-0800-04000-EE	<i>Pins - Taper - Metric - Extractable - External Thread</i>	Material: Carbon Steel
8.00 (0.315")	45.00	8.90	TPM-0800-04500-EI	<i>Pins - Taper - Metric - Extractable - Internal Thread</i>	Material: Carbon Steel
8.00 (0.315")	45.00	8.90	TPM-0800-04500-M	<i>Pins - Taper - Metric - Carbon Steel</i>	Material: Carbon Steel
8.00 (0.315")	50.00	9.00	TPM-0800-05000-EI	<i>Pins - Taper - Metric - Extractable - Internal Thread</i>	Material: Carbon Steel
8.00 (0.315")	50.00	9.00	TPM-0800-05000-M	<i>Pins - Taper - Metric - Carbon Steel</i>	Material: Carbon Steel
8.00 (0.315")	55.00	9.10	TPM-0800-05500-EI	<i>Pins - Taper - Metric - Extractable - Internal Thread</i>	Material: Carbon Steel
8.00 (0.315")	55.00	9.10	TPM-0800-05500-M	<i>Pins - Taper - Metric - Carbon Steel</i>	Material: Carbon Steel
8.00 (0.315")	60.00	9.20	TPM-0800-06000-EI	<i>Pins - Taper - Metric - Extractable - Internal Thread</i>	Material: Carbon Steel
8.00 (0.315")	60.00	9.20	TPM-0800-06000-M	<i>Pins - Taper - Metric - Carbon Steel</i>	Material: Carbon Steel
8.00 (0.315")	65.00	9.30	TPM-0800-06500-EE	<i>Pins - Taper - Metric - Extractable - External Thread</i>	Material: Carbon Steel
8.00 (0.315")	65.00	9.30	** TPM-0800-06500-M	<i>Pins - Taper - Metric - Carbon Steel</i>	Material: Carbon Steel
8.00 (0.315")	70.00	9.40	TPM-0800-07000-EI	<i>Pins - Taper - Metric - Extractable - Internal Thread</i>	Material: Carbon Steel
8.00 (0.315")	70.00	9.40	TPM-0800-07000-M	<i>Pins - Taper - Metric - Carbon Steel</i>	Material: Carbon Steel
8.00 (0.315")	80.00	9.60	TPM-0800-08000-M	<i>Pins - Taper - Metric - Carbon Steel</i>	Material: Carbon Steel
8.00 (0.315")	80.00	9.60	TPM-0800-08000-EI	<i>Pins - Taper - Metric - Extractable - Internal Thread</i>	Material: Carbon Steel
8.00 (0.315")	90.00	9.80	TPM-0800-09000-EI	<i>Pins - Taper - Metric - Extractable - Internal Thread</i>	Material: Carbon Steel
8.00 (0.315")	90.00	9.80	TPM-0800-09000-M	<i>Pins - Taper - Metric - Carbon Steel</i>	Material: Carbon Steel
8.00 (0.315")	100.00	10.00	TPM-0800-10000-EI	<i>Pins - Taper - Metric - Extractable - Internal Thread</i>	Material: Carbon Steel
8.00 (0.315")	100.00	10.00	TPM-0800-10000-M	<i>Pins - Taper - Metric - Carbon Steel</i>	Material: Carbon Steel
8.00 (0.315")	110.00	10.20	TPM-0800-11000-EI	<i>Pins - Taper - Metric - Extractable - Internal Thread</i>	Material: Carbon Steel
8.00 (0.315")	120.00	10.40	TPM-0800-12000-EI	<i>Pins - Taper - Metric - Extractable - Internal Thread</i>	Material: Carbon Steel
10.00 (0.394")	24.00	10.48	TPM-1000-02400-EI	<i>Pins - Taper - Metric - Extractable - Internal Thread</i>	Material: Carbon Steel
10.00 (0.394")	26.00	10.52	TPM-1000-02600-EI	<i>Pins - Taper - Metric - Extractable - Internal Thread</i>	Material: Carbon Steel
10.00 (0.394")	28.00	10.56	TPM-1000-02800-EI	<i>Pins - Taper - Metric - Extractable - Internal Thread</i>	Material: Carbon Steel
10.00 (0.394")	28.00	10.56	TPM-1000-02800-M	<i>Pins - Taper - Metric - Carbon Steel</i>	Material: Carbon Steel
10.00 (0.394")	30.00	10.60	TPM-1000-03000-EI	<i>Pins - Taper - Metric - Extractable - Internal Thread</i>	Material: Carbon Steel
10.00 (0.394")	30.00	10.60	TPM-1000-03000-M	<i>Pins - Taper - Metric - Carbon Steel</i>	Material: Carbon Steel

Usually stocked or Short Delivery
 ** Available while stocks last **

Long Delivery or Large Minimum Quantities
 Not in current production

Metric Taper Pins

Nom. Small End Diameter (D) mm (inches)	Length (L) mm	Nom. Large End Diameter (D2) mm	Part Number		
10.00 (0.394")	32.00	10.64	TPM-1000-03200-EI	<i>Pins - Taper - Metric - Extractable - Internal Thread</i>	Material: Carbon Steel
10.00 (0.394")	32.00	10.64	TPM-1000-03200-M	<i>Pins - Taper - Metric - Carbon Steel</i>	Material: Carbon Steel
10.00 (0.394")	36.00	10.72	TPM-1000-03600-EI	<i>Pins - Taper - Metric - Extractable - Internal Thread</i>	Material: Carbon Steel
10.00 (0.394")	36.00	10.72	TPM-1000-03600-M	<i>Pins - Taper - Metric - Carbon Steel</i>	Material: Carbon Steel
10.00 (0.394")	40.00	10.80	TPM-1000-04000-M	<i>Pins - Taper - Metric - Carbon Steel</i>	Material: Carbon Steel
10.00 (0.394")	40.00	10.80	TPM-1000-04000-EI	<i>Pins - Taper - Metric - Extractable - Internal Thread</i>	Material: Carbon Steel
10.00 (0.394")	45.00	10.90	TPM-1000-04500-EI	<i>Pins - Taper - Metric - Extractable - Internal Thread</i>	Material: Carbon Steel
10.00 (0.394")	45.00	10.90	TPM-1000-04500-M	<i>Pins - Taper - Metric - Carbon Steel</i>	Material: Carbon Steel
10.00 (0.394")	50.00	11.00	TPM-1000-05000-EI	<i>Pins - Taper - Metric - Extractable - Internal Thread</i>	Material: Carbon Steel
10.00 (0.394")	50.00	11.00	TPM-1000-05000-M	<i>Pins - Taper - Metric - Carbon Steel</i>	Material: Carbon Steel
10.00 (0.394")	55.00	11.10	TPM-1000-05500-EI	<i>Pins - Taper - Metric - Extractable - Internal Thread</i>	Material: Carbon Steel
10.00 (0.394")	55.00	11.10	TPM-1000-05500-M	<i>Pins - Taper - Metric - Carbon Steel</i>	Material: Carbon Steel
10.00 (0.394")	60.00	11.20	TPM-1000-06000-EI	<i>Pins - Taper - Metric - Extractable - Internal Thread</i>	Material: Carbon Steel
10.00 (0.394")	60.00	11.20	TPM-1000-06000-M	<i>Pins - Taper - Metric - Carbon Steel</i>	Material: Carbon Steel
10.00 (0.394")	65.00	11.30	TPM-1000-06500-M	<i>Pins - Taper - Metric - Carbon Steel</i>	Material: Carbon Steel
10.00 (0.394")	70.00	11.40	TPM-1000-07000-EI	<i>Pins - Taper - Metric - Extractable - Internal Thread</i>	Material: Carbon Steel
10.00 (0.394")	70.00	11.40	TPM-1000-07000-M	<i>Pins - Taper - Metric - Carbon Steel</i>	Material: Carbon Steel
10.00 (0.394")	80.00	11.60	TPM-1000-08000-EI	<i>Pins - Taper - Metric - Extractable - Internal Thread</i>	Material: Carbon Steel
10.00 (0.394")	80.00	11.60	TPM-1000-08000-M	<i>Pins - Taper - Metric - Carbon Steel</i>	Material: Carbon Steel
10.00 (0.394")	90.00	11.80	TPM-1000-09000-EI	<i>Pins - Taper - Metric - Extractable - Internal Thread</i>	Material: Carbon Steel
10.00 (0.394")	90.00	11.80	TPM-1000-09000-M	<i>Pins - Taper - Metric - Carbon Steel</i>	Material: Carbon Steel
10.00 (0.394")	100.00	12.00	TPM-1000-10000-EI	<i>Pins - Taper - Metric - Extractable - Internal Thread</i>	Material: Carbon Steel
10.00 (0.394")	100.00	12.00	TPM-1000-10000-M	<i>Pins - Taper - Metric - Carbon Steel</i>	Material: Carbon Steel
10.00 (0.394")	110.00	12.20	TPM-1000-11000-EI	<i>Pins - Taper - Metric - Extractable - Internal Thread</i>	Material: Carbon Steel
10.00 (0.394")	120.00	12.40	TPM-1000-12000-EI	<i>Pins - Taper - Metric - Extractable - Internal Thread</i>	Material: Carbon Steel
12.00 (0.472")	30.00	12.60	** TPM-1200-03000-M	<i>Pins - Taper - Metric - Carbon Steel</i>	Material: Carbon Steel
12.00 (0.472")	32.00	12.64	TPM-1200-03200-M	<i>Pins - Taper - Metric - Carbon Steel</i>	Material: Carbon Steel
12.00 (0.472")	32.00	12.64	TPM-1200-03200-EI	<i>Pins - Taper - Metric - Extractable - Internal Thread</i>	Material: Carbon Steel
12.00 (0.472")	36.00	12.72	TPM-1200-03600-EI	<i>Pins - Taper - Metric - Extractable - Internal Thread</i>	Material: Carbon Steel
12.00 (0.472")	36.00	12.72	TPM-1200-03600-M	<i>Pins - Taper - Metric - Carbon Steel</i>	Material: Carbon Steel
12.00 (0.472")	40.00	12.80	TPM-1200-04000-EI	<i>Pins - Taper - Metric - Extractable - Internal Thread</i>	Material: Carbon Steel

Usually stocked or Short Delivery
 ** Available while stocks last **

Long Delivery or Large Minimum Quantities
 Not in current production

Metric Taper Pins

Nom. Small End Diameter (D) mm (inches)	Length (L) mm	Nom. Large End Diameter (D2) mm	Part Number		
12.00 (0.472")	40.00	12.80	TPM-1200-04000-M	<i>Pins - Taper - Metric - Carbon Steel</i>	Material: Carbon Steel
12.00 (0.472")	45.00	12.90	TPM-1200-04500-M	<i>Pins - Taper - Metric - Carbon Steel</i>	Material: Carbon Steel
12.00 (0.472")	45.00	12.90	TPM-1200-04500-EI	<i>Pins - Taper - Metric - Extractable - Internal Thread</i>	Material: Carbon Steel
12.00 (0.472")	50.00	13.00	TPM-1200-05000-M	<i>Pins - Taper - Metric - Carbon Steel</i>	Material: Carbon Steel
12.00 (0.472")	50.00	13.00	TPM-1200-05000-EI	<i>Pins - Taper - Metric - Extractable - Internal Thread</i>	Material: Carbon Steel
12.00 (0.472")	55.00	13.10	TPM-1200-05500-EI	<i>Pins - Taper - Metric - Extractable - Internal Thread</i>	Material: Carbon Steel
12.00 (0.472")	55.00	13.10	TPM-1200-05500-M	<i>Pins - Taper - Metric - Carbon Steel</i>	Material: Carbon Steel
12.00 (0.472")	60.00	13.20	TPM-1200-06000-EI	<i>Pins - Taper - Metric - Extractable - Internal Thread</i>	Material: Carbon Steel
12.00 (0.472")	60.00	13.20	TPM-1200-06000-M	<i>Pins - Taper - Metric - Carbon Steel</i>	Material: Carbon Steel
12.00 (0.472")	65.00	13.30	TPM-1200-06500-M	<i>Pins - Taper - Metric - Carbon Steel</i>	Material: Carbon Steel
12.00 (0.472")	70.00	13.40	TPM-1200-07000-M	<i>Pins - Taper - Metric - Carbon Steel</i>	Material: Carbon Steel
12.00 (0.472")	70.00	13.40	TPM-1200-07000-EI	<i>Pins - Taper - Metric - Extractable - Internal Thread</i>	Material: Carbon Steel
12.00 (0.472")	80.00	13.60	TPM-1200-08000-EI	<i>Pins - Taper - Metric - Extractable - Internal Thread</i>	Material: Carbon Steel
12.00 (0.472")	80.00	13.60	TPM-1200-08000-M	<i>Pins - Taper - Metric - Carbon Steel</i>	Material: Carbon Steel
12.00 (0.472")	90.00	13.80	TPM-1200-09000-EI	<i>Pins - Taper - Metric - Extractable - Internal Thread</i>	Material: Carbon Steel
12.00 (0.472")	90.00	13.80	TPM-1200-09000-M	<i>Pins - Taper - Metric - Carbon Steel</i>	Material: Carbon Steel
12.00 (0.472")	100.00	14.00	TPM-1200-10000-EI	<i>Pins - Taper - Metric - Extractable - Internal Thread</i>	Material: Carbon Steel
12.00 (0.472")	100.00	14.00	TPM-1200-10000-M	<i>Pins - Taper - Metric - Carbon Steel</i>	Material: Carbon Steel
12.00 (0.472")	110.00	14.20	TPM-1200-11000-EI	<i>Pins - Taper - Metric - Extractable - Internal Thread</i>	Material: Carbon Steel
12.00 (0.472")	110.00	14.20	TPM-1200-11000-M	<i>Pins - Taper - Metric - Carbon Steel</i>	Material: Carbon Steel
12.00 (0.472")	120.00	14.40	TPM-1200-12000-EI	<i>Pins - Taper - Metric - Extractable - Internal Thread</i>	Material: Carbon Steel
12.00 (0.472")	120.00	14.40	TPM-1200-12000-M	<i>Pins - Taper - Metric - Carbon Steel</i>	Material: Carbon Steel
14.00 (0.551")	40.00	14.80	TPM-1400-04000-EI	<i>Pins - Taper - Metric - Extractable - Internal Thread</i>	Material: Carbon Steel
14.00 (0.551")	45.00	14.90	TPM-1400-04500-EI	<i>Pins - Taper - Metric - Extractable - Internal Thread</i>	Material: Carbon Steel
14.00 (0.551")	50.00	15.00	TPM-1400-05000-EI	<i>Pins - Taper - Metric - Extractable - Internal Thread</i>	Material: Carbon Steel
14.00 (0.551")	55.00	15.10	TPM-1400-05500-EI	<i>Pins - Taper - Metric - Extractable - Internal Thread</i>	Material: Carbon Steel
14.00 (0.551")	60.00	15.20	TPM-1400-06000-EI	<i>Pins - Taper - Metric - Extractable - Internal Thread</i>	Material: Carbon Steel
14.00 (0.551")	70.00	15.40	TPM-1400-07000-EI	<i>Pins - Taper - Metric - Extractable - Internal Thread</i>	Material: Carbon Steel
14.00 (0.551")	70.00	15.40	TPM-1400-07000-M	<i>Pins - Taper - Metric - Carbon Steel</i>	Material: Carbon Steel
14.00 (0.551")	80.00	15.60	TPM-1400-08000-EI	<i>Pins - Taper - Metric - Extractable - Internal Thread</i>	Material: Carbon Steel
14.00 (0.551")	90.00	15.80	TPM-1400-09000-EI	<i>Pins - Taper - Metric - Extractable - Internal Thread</i>	Material: Carbon Steel

Usually stocked or Short Delivery
 ** Available while stocks last **

Long Delivery or Large Minimum Quantities
 Not in current production

Metric Taper Pins

Nom. Small End Diameter (D) mm (inches)	Length (L) mm	Nom. Large End Diameter (D2) mm	Part Number		
14.00 (0.551")	90.00	15.80	TPM-1400-09000-M	Pins - Taper - Metric - Carbon Steel	Material: Carbon Steel
14.00 (0.551")	100.00	16.00	TPM-1400-10000-EI	Pins - Taper - Metric - Extractable - Internal Thread	Material: Carbon Steel
14.00 (0.551")	110.00	16.20	TPM-1400-11000-EI	Pins - Taper - Metric - Extractable - Internal Thread	Material: Carbon Steel
14.00 (0.551")	120.00	16.40	TPM-1400-12000-EI	Pins - Taper - Metric - Extractable - Internal Thread	Material: Carbon Steel
16.00 (0.630")	40.00	16.80	TPM-1600-04000-EI	Pins - Taper - Metric - Extractable - Internal Thread	Material: Carbon Steel
16.00 (0.630")	45.00	16.90	TPM-1600-04500-EI	Pins - Taper - Metric - Extractable - Internal Thread	Material: Carbon Steel
16.00 (0.630")	50.00	17.00	TPM-1600-05000-EI	Pins - Taper - Metric - Extractable - Internal Thread	Material: Carbon Steel
16.00 (0.630")	55.00	17.10	TPM-1600-05500-EI	Pins - Taper - Metric - Extractable - Internal Thread	Material: Carbon Steel
16.00 (0.630")	60.00	17.20	TPM-1600-06000-EI	Pins - Taper - Metric - Extractable - Internal Thread	Material: Carbon Steel
16.00 (0.630")	70.00	17.40	TPM-1600-07000-EI	Pins - Taper - Metric - Extractable - Internal Thread	Material: Carbon Steel
16.00 (0.630")	80.00	17.60	TPM-1600-08000-EI	Pins - Taper - Metric - Extractable - Internal Thread	Material: Carbon Steel
16.00 (0.630")	90.00	17.80	TPM-1600-09000-EI	Pins - Taper - Metric - Extractable - Internal Thread	Material: Carbon Steel
16.00 (0.630")	100.00	18.00	TPM-1600-10000-EI	Pins - Taper - Metric - Extractable - Internal Thread	Material: Carbon Steel
16.00 (0.630")	110.00	18.20	TPM-1600-11000-EI	Pins - Taper - Metric - Extractable - Internal Thread	Material: Carbon Steel
16.00 (0.630")	120.00	18.40	TPM-1600-12000-EI	Pins - Taper - Metric - Extractable - Internal Thread	Material: Carbon Steel
20.00 (0.787")	40.00	20.80	TPM-2000-04000-EI	Pins - Taper - Metric - Extractable - Internal Thread	Material: Carbon Steel
20.00 (0.787")	45.00	20.90	TPM-2000-04500-EI	Pins - Taper - Metric - Extractable - Internal Thread	Material: Carbon Steel
20.00 (0.787")	50.00	21.00	TPM-2000-05000-EI	Pins - Taper - Metric - Extractable - Internal Thread	Material: Carbon Steel
20.00 (0.787")	55.00	21.10	TPM-2000-05500-EI	Pins - Taper - Metric - Extractable - Internal Thread	Material: Carbon Steel
20.00 (0.787")	60.00	21.20	TPM-2000-06000-EI	Pins - Taper - Metric - Extractable - Internal Thread	Material: Carbon Steel
20.00 (0.787")	70.00	21.40	TPM-2000-07000-EI	Pins - Taper - Metric - Extractable - Internal Thread	Material: Carbon Steel
20.00 (0.787")	80.00	21.60	TPM-2000-08000-EI	Pins - Taper - Metric - Extractable - Internal Thread	Material: Carbon Steel
20.00 (0.787")	90.00	21.80	** TPM-2000-09000-EI	Pins - Taper - Metric - Extractable - Internal Thread	Material: Carbon Steel
20.00 (0.787")	90.00	21.80	TPM-2000-09000-M	Pins - Taper - Metric - Carbon Steel	Material: Carbon Steel
20.00 (0.787")	100.00	22.00	** TPM-2000-10000-EI	Pins - Taper - Metric - Extractable - Internal Thread	Material: Carbon Steel
20.00 (0.787")	110.00	22.20	TPM-2000-11000-EI	Pins - Taper - Metric - Extractable - Internal Thread	Material: Carbon Steel
20.00 (0.787")	120.00	22.40	TPM-2000-12000-EI	Pins - Taper - Metric - Extractable - Internal Thread	Material: Carbon Steel

Usually stocked or Short Delivery
 ** Available while stocks last **

Long Delivery or Large Minimum Quantities
 Not in current production

Tips

Imperial and Metric taper pins are sized using different methods.

- Imperial taper pins are specified by the large end diameter x the length and have a 1:48 taper
- Metric taper pins are specified by the small end diameter x the length and have a 1:50 taper

This means that an imperial taper pin will vary at the small diameter depending on the length of the pin. Eg, a number 1 imperial taper pin is always 4.37mm diameter at the large end, and will vary according to the length due to a 1:48 taper.

Similarly, a metric taper pin will vary at the large end diameter. Eg, an 8mm taper pin is always 8mm at the small end, but the large end diameter will vary according to the length due to the 1:50 taper.

The taper specification (1:48, or 1:50) refers to the taper of the overall pin diameter, not to the taper of the edges.

- A 100mm long metric pin will increase in diameter by a total of 2mm at the large end.
- A 4" (101.6mm) long imperial pin will decrease in diameter by a total of 0.083" (2.117mm) at the short end

Note! If the taper ratio was applied to the edges of the pin, the result would be double the actual change in diameter.

Extractable taper pins come either with an internal thread or an external thread, designed to allow for easier removal using a slide hammer or other methods. We are phasing out externally threaded pins in favour of the more convenient internally threaded.



Distributed By

Miniature Bearings Australia
<http://www.minibearings.com.au>
sales@minibearings.com.au

Resellers: Please place your contact sticker over our details

Avoid verbal communication

We sell an extensive range of products with varying amounts of technical data. Please assist us to provide you with accurate information by placing your orders and enquiries online or by e-mail.

Taper Pins